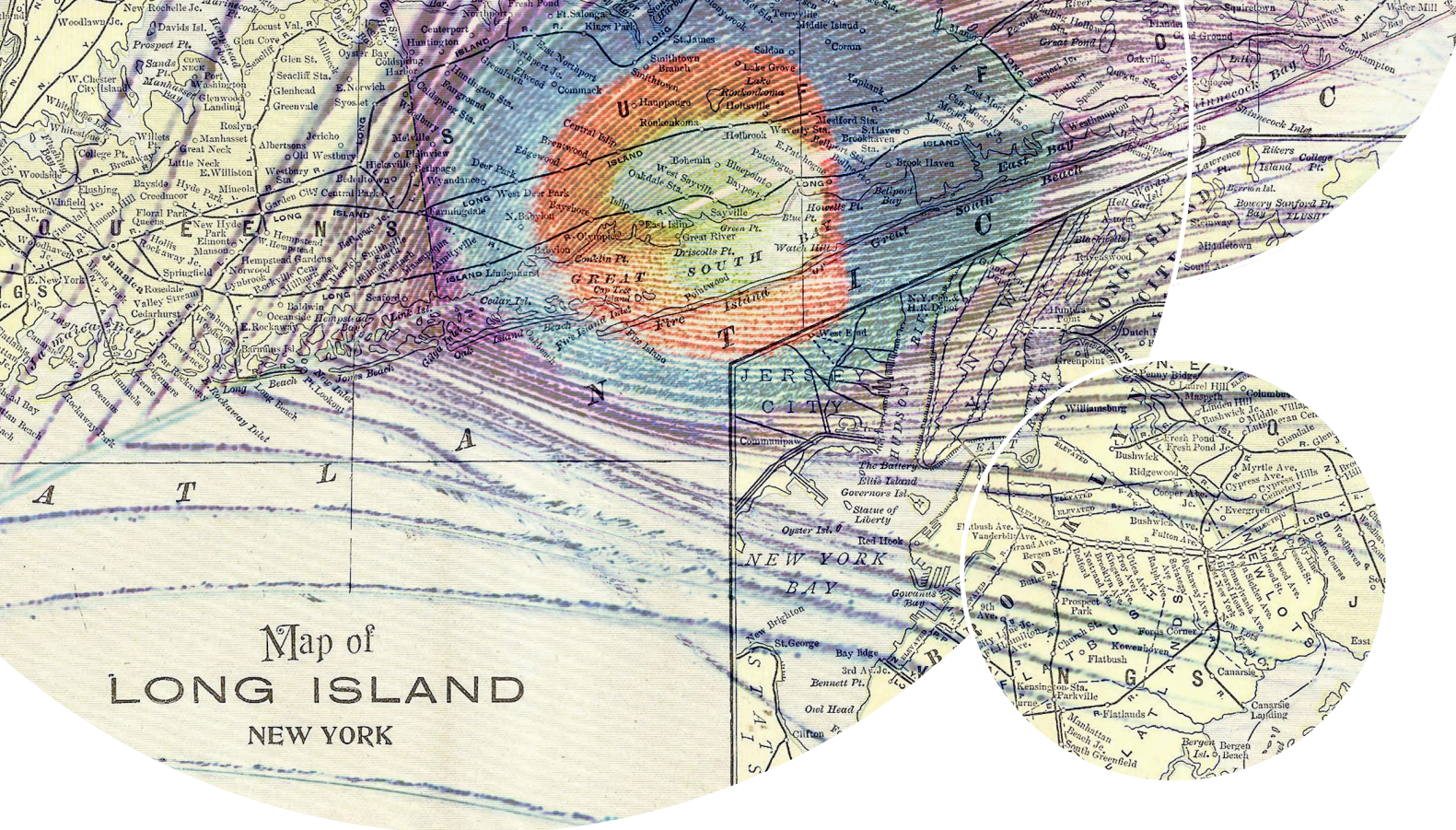




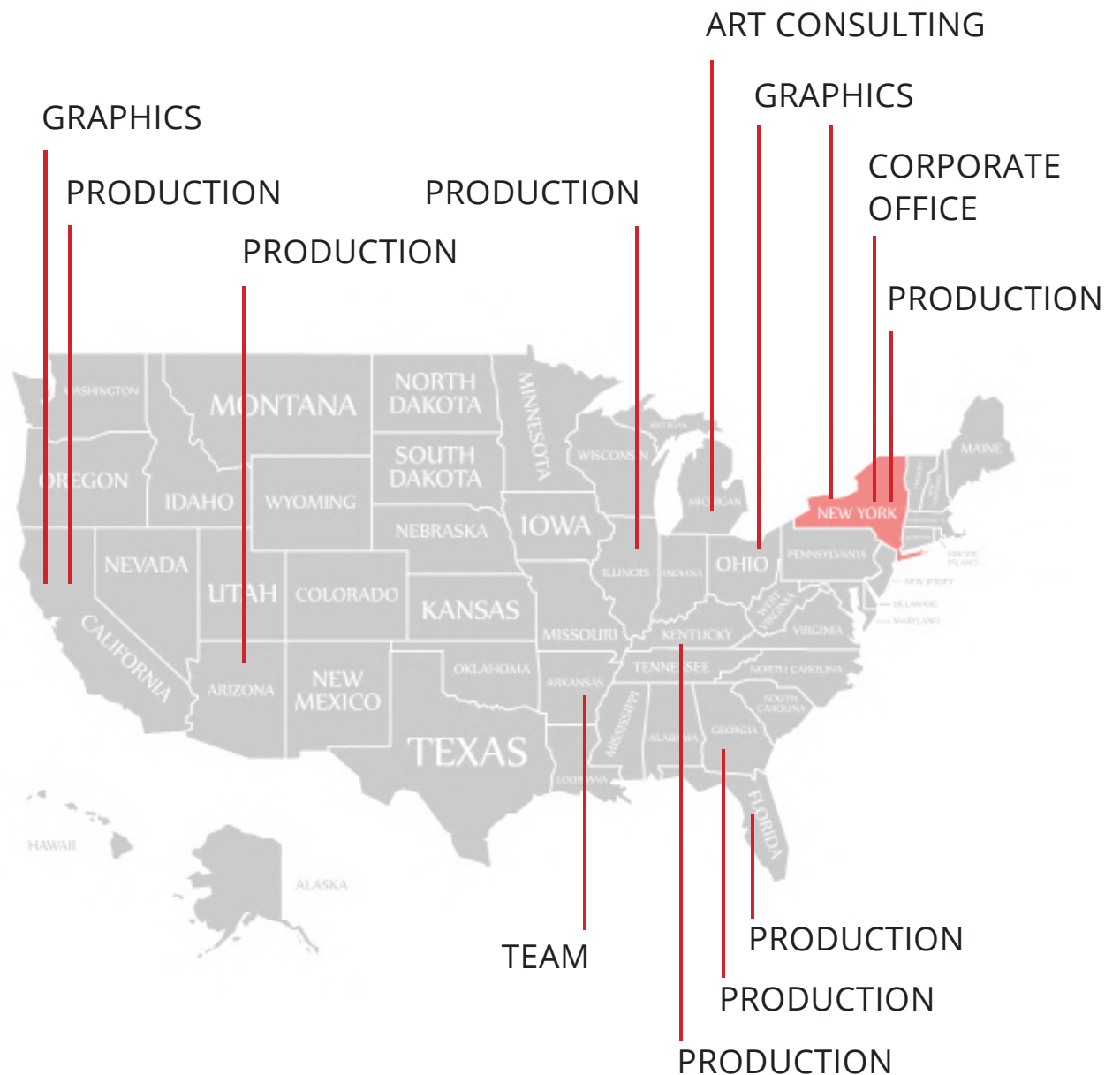
ARTLINE GROUP  
OVERVIEW



# ABOUT US

Established in 1978, we are known for our vast years of experience and providing unique solutions to the most complex requirements. Our production facilities, geographically located throughout the country, can save on both lead time and cost. We are your turn-key provider of art and mirrors, from design to production to installation.

Artline Group is committed to the highest performance of service and products. We are proud Corporate Partners of organizations such as NEWH, which supports the growth of talent in the design industry. The combination of our experience with the drive to keep learning and innovating makes us a leader with the latest trends and products in the industry.







**HOSPITALITY**

**HEALTHCARE**

**GOVERNMENT**

**COMMERCIAL**



# HOSPITALITY

Preferred Suppliers for Mirrors and Art:



Corporate Partner:



# PROJECT PROCESS



1

## PROJECT BRIEF & PROBLEM SOLVING

First, you'll get connected to a Project Manager and Art Consultant who will process the scope of your project. To be sure we understand your artwork needs, we'll take notes, ask questions, and request design materials and/or inspiration.



2

## ART DEVELOPMENT & GRAPHIC DESIGN

Then, our team will work with our Graphics Department (behind the scenes) to develop and deliver a preliminary artwork package. Once reviewed by you, we happily revise the artwork until you feel that it is ready to go!



3

## ART APPROVAL & LOGISTICS

Next, we nail down the project specifications and provide a quote based on the quantity, finishings, imagery, medium, matting, and size for each item. When you're ready to order, we prepare a final contact sheet for your review and approval.



4

## PRODUCTION & DELIVERY

After the final contact sheet has been approved, your artwork heads to production and is on its way. It should arrive in roughly **3-6 weeks**. If you're on a tighter timeline, please let us know and we'll make it work.

# PROJECT BRIEF

## IMAGERY

- Modern Artwork Style
- Fun & Whimsical
- Bright Image Color
- Mix of Compositions
- Nature Photos
- Black and White Photos
- Figurative Artwork

## BUDGET

- Price Per Piece ~ \$30
- Overall Budget \$17,000

## SCOPE

- 40 Guest Rooms
- 4 Pieces / 2 Mirrors per Room
- 10 Additional for Public Space
- Custom Art Mural in Lobby

## TIMELINE

- Hot Rush!
- Order in 3 weeks
- Install Q4

## CONCEPT

- Hotel in San Antonio, TX
- Modern Rustic Style
- Historic Building
- Inspired by Pop Art
- Renovation
- Mood Board shown

## FINISHES

- Added Texture
- Standoffs
- Colored Accent Mat
- Groupings
- Canvas
- Silver Frames

Boutique Hotel  
San Antonio, TX

Everything you share about your project is helpful and appreciated!



# ART DEVELOPMENT & GRAPHIC DESIGN

- RECOLOR
- ADD COLOR
- OVERLAY
- CROP
- MULTI-LAYER
- HAND DRAWN
- CUSTOM
- COMMISSION
- & MORE!





# LOCALLY YOURS ....



BELOW LEFT: *Imagery deckled and floated over mat.*

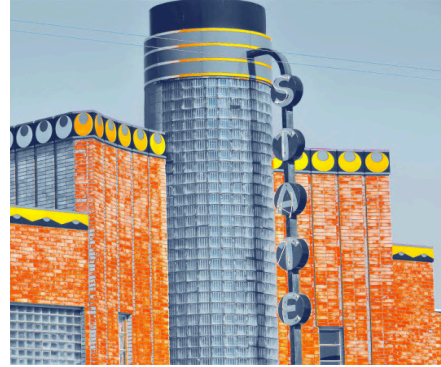


BELOW LEFT: *Watercolor overlay.* ABOVE: *New York Skyline overlay on fans.*





baltimore, md



ABOVE: Black and white image with laser-cut mat shape.

LEFT: Custom artistic map.

ABOVE: Artwork collage with watercolor overlay and unique border.

BELOW: Custom artistic map.



... DESIGNS WITH LOCATION IN MIND!



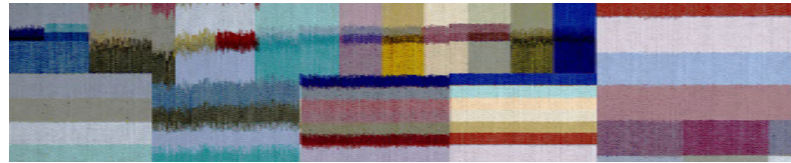
# CUSTOM CREATIONS ...



*You can find conceptual examples  
and inspiration on Pinterest or Etsy  
and we can find ways to create  
and value-engineer those ideas!*



*ABOVE: Modernized  
historic image.*



*BELOW: Custom art  
with paint texture.*







BELOW: *Landmark with painted pattern overlay.*



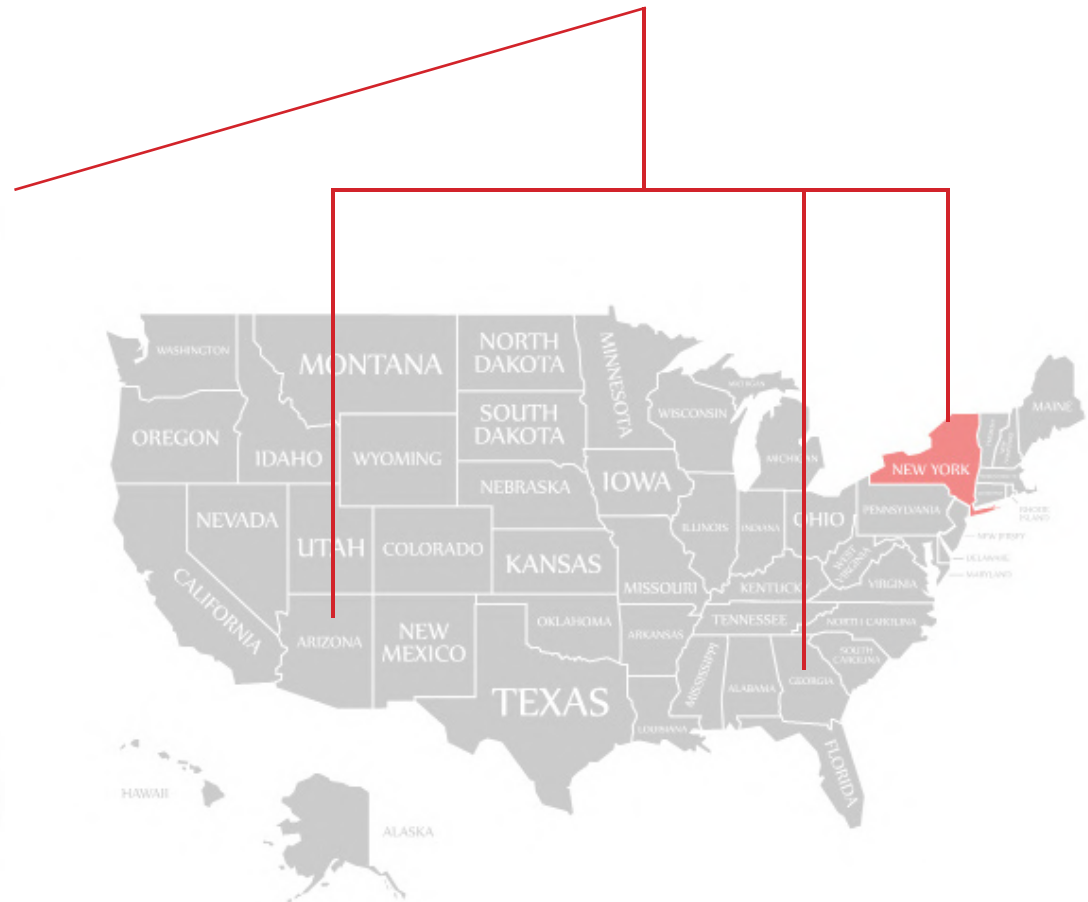
ABOVE & BELOW: *Shape as overlay with white negative space.*

... YOUR INSPIRATION, OUR CREATION!



# ART APPROVAL & LOGISTICS

**PROJECT MANAGERS**  
coordinate with  
production to  
determine which  
location is best  
fit for your project.





# PROJECT EXAMPLES



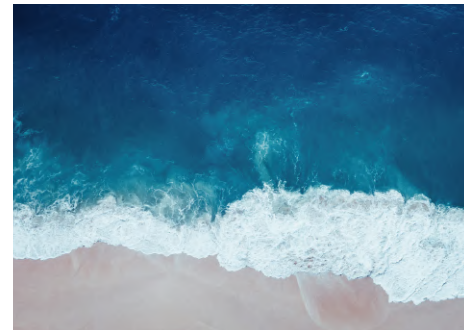
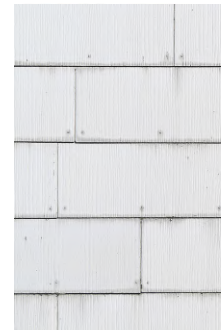
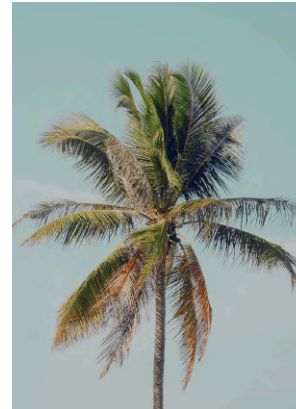
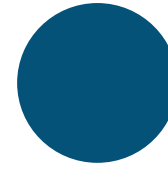
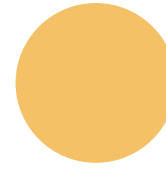
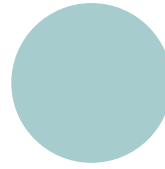
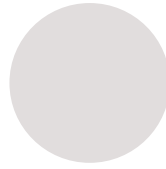


# HOTEL - DEL MAR, CA

Inspiration: The design firm aimed to embrace a Coastal Boho aesthetic. The ownership wanted to highlight the authentic SoCal activities this area is famous for: surfing and horse racing.

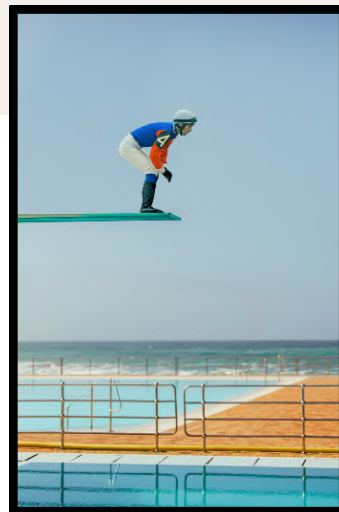
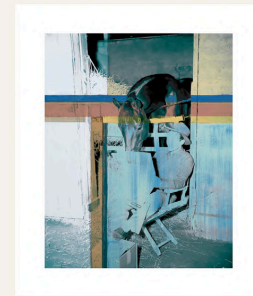
## KEYWORDS:

- Light and Airy
- Whimsical and Playful
- Retro Glam
- Modern Flair
- Beach-Inspired
- Iconic SoCal Style





# ARTWORK PACKAGE



TOP: *Retro Photo Framed Gallery Wall  
Dipped in Gold Paint.*

MIDDLE LEFT: *Retro Horse Race Print  
with String Art Overlay.*

MIDDLE RIGHT: *Beach & Racing  
"Mash-Up" Whimsical Framed Prints*

BELOW: *Hotel Lobby with  
Gallery Wall*



LEFT: *Laser cut dimensional wall  
decor*



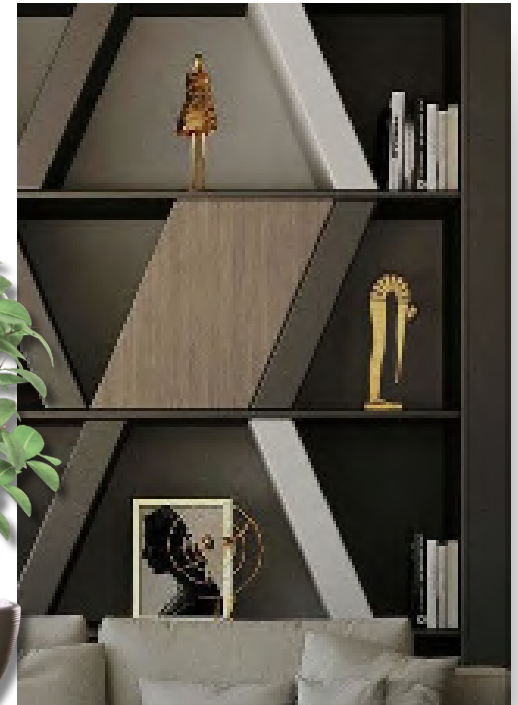
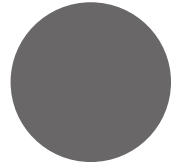
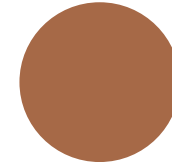
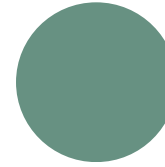
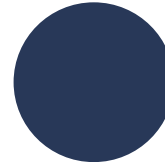
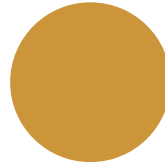


# HOTEL - SEATTLE, WA

Inspiration: The design firm aspired to create an atmosphere of sophisticated luxury with a nod to Seattle's Iconic Skyline. The ownership sought to integrate artwork that would harmonize with the industrial modern interior furnishings.

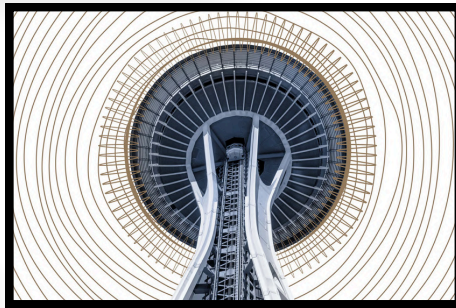
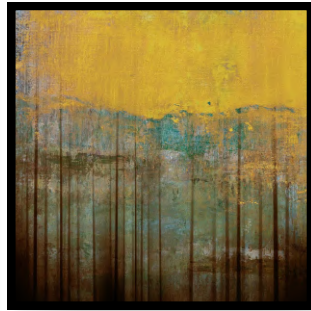
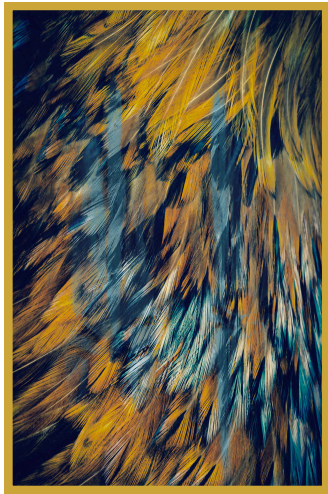
## KEYWORDS:

*Rich Jewel Tones - Abstract Organic Shapes -  
Urban Industrial Design - Regional Flair -  
Natural Elements - Pattern & Texture*





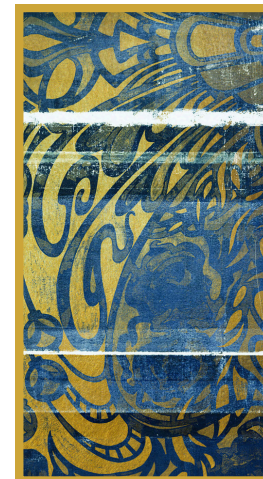
# ARTWORK PACKAGE



TOP ROW:  
Abstract Art, Mirror, Photo  
w/ Overlay

MIDDLE ROW:  
Urban, Graffiti, & Textural  
Designs

BOTTOM ROW:  
Gold Leaf Dimension Art  
Gallery Wall, Organic  
Abstract Prints





A collage of interior design materials. In the top left, a wooden surface is visible. Below it, several fabric swatches with different textures and colors (dark green, light blue, beige) are layered. A paintbrush with yellow bristles and a black handle lies diagonally across the center. A pencil with a black eraser and a green band is positioned below the paintbrush. A small, dried, light-colored flower is in the lower right. The background is a light, textured surface.

# PRODUCT CAPABILITIES





**MIRRORS  
ARTWORK FINISHES  
LIGHTED ARTWORK  
LASER CUT  
SCRATCH-RESISTANT PANELS  
DIMENSIONAL ART  
MOSS WALLS**



# MIRRORS

## MIRRORS

ARTWORK FINISHES

LIGHTED ARTWORK

LASER CUT

SCRATCH-RESISTANT PANELS

DIMENSIONAL ART

MOSS WALLS





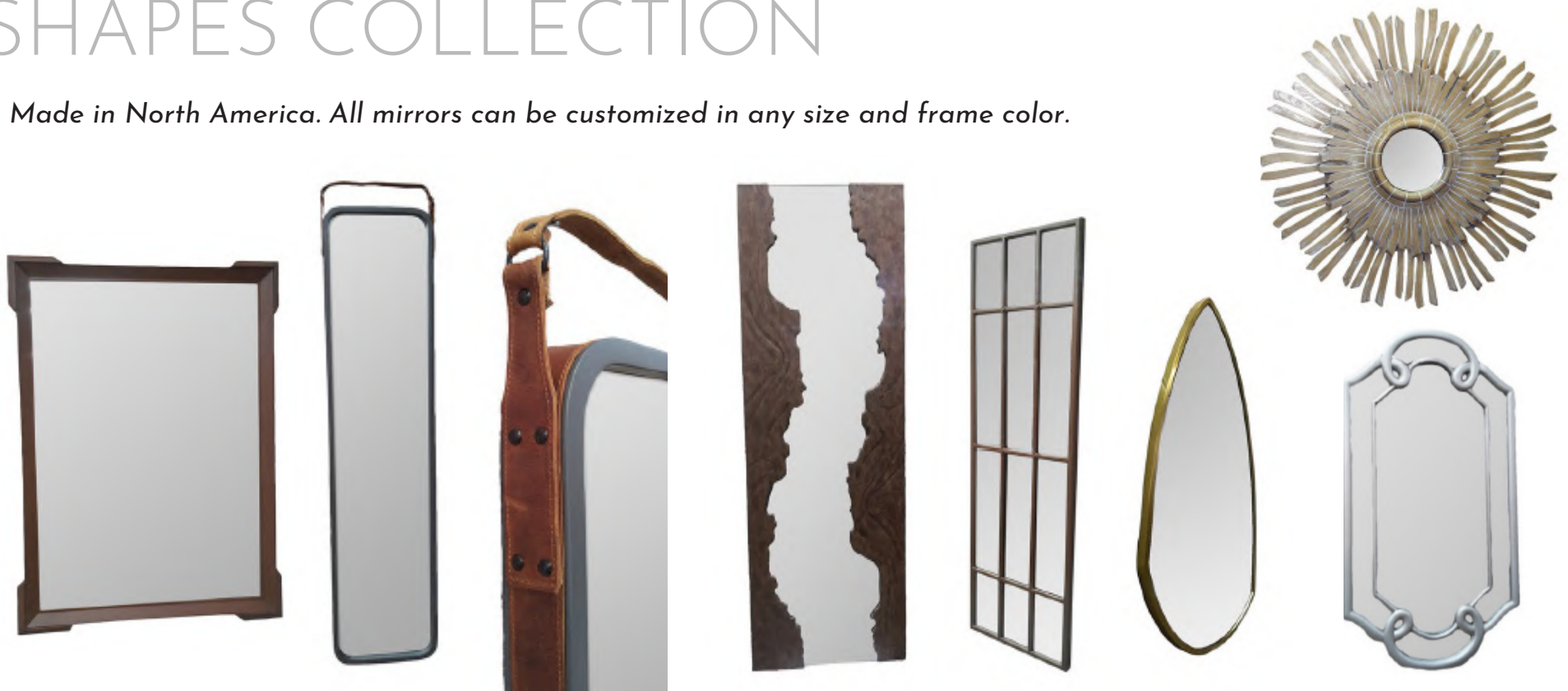
# LIGHTED MIRRORS

*Several standard sizes stocked in North America. Can be customized in any size and frame color.*



# SHAPES COLLECTION

*Made in North America. All mirrors can be customized in any size and frame color.*





# PRINTED MIRRORS



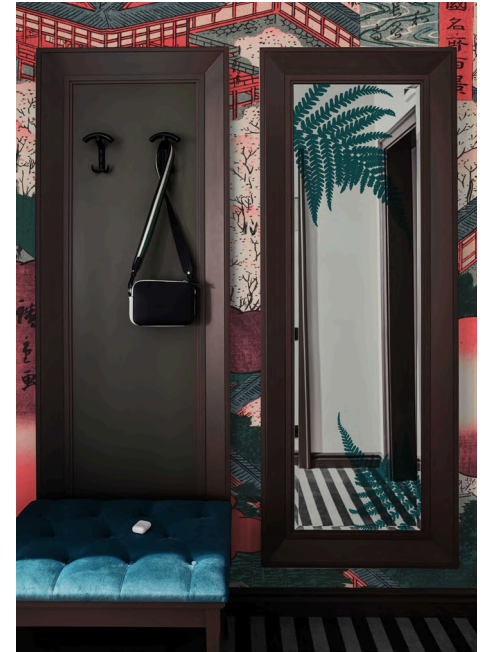
ABOVE: *Paint drip printed on mirror.*



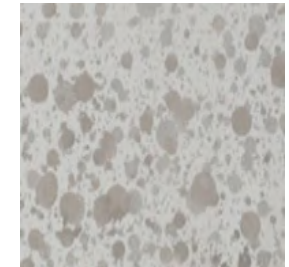
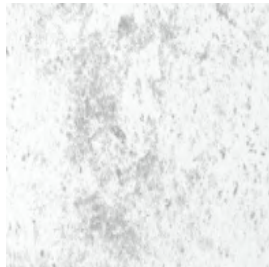
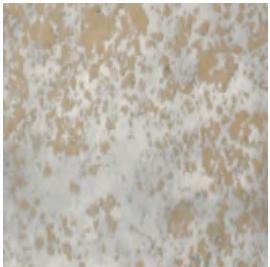
ABOVE: *Text printed on mirror.*



ABOVE: *Ferns printed to extend wall vinyl pattern.*



# ANTIQUE MIRROR FINISHES







# ARTWORK FINISHES

MIRRORS

**ARTWORK FINISHES**

LIGHTED ARTWORK

LASER CUT

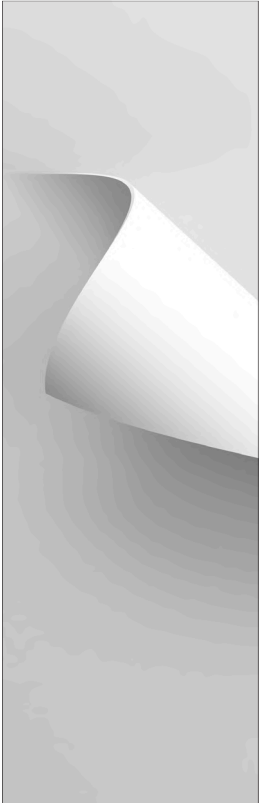
SCRATCH-RESISTANT PANELS

DIMENSIONAL ART

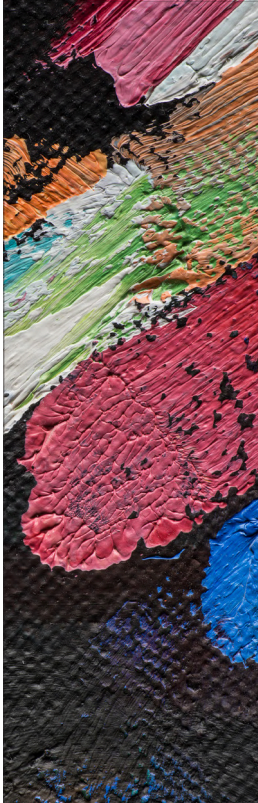
MOSS WALLS



# MATERIALS



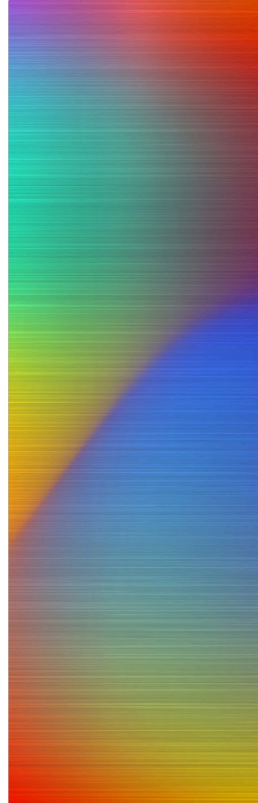
PAPER



CANVAS



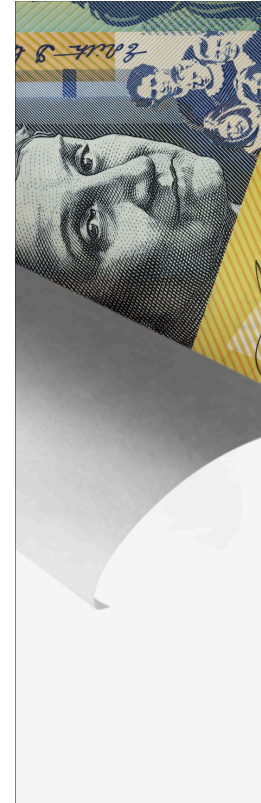
ACRYLIC



METAL



WOOD



VINYL



PLASTER



# EXAMPLES



TOP LEFT: Large-scale wall vinyl. TOP RIGHT: Canvas in floater frame. BOTTOM LEFT: Framed Art. BOT. MIDDLE (TOP): Framed Art Grouping / Collage Wall. BOT. MIDDLE (BOTTOM): Multi-layer Acrylic with Stand-Offs. BOTTOM RIGHT: Aluminum with Stand-Offs



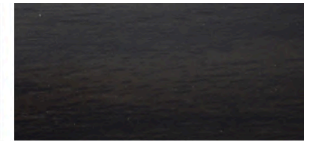
# POPULAR FRAME FINISHES



D-1607



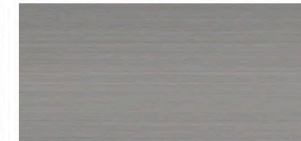
D-1608



B20



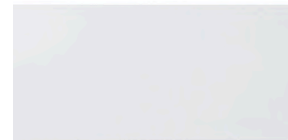
R-017



R-018



B219



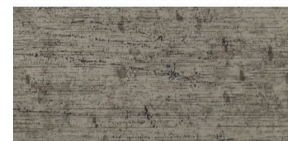
X-010-1



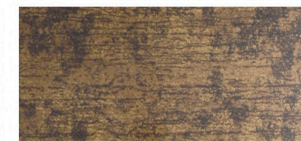
X-1301



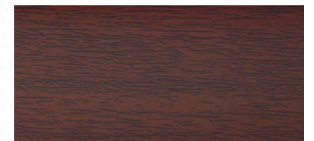
B231



X-1351



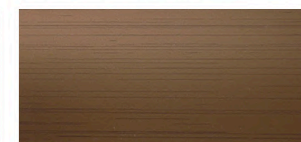
X-1380



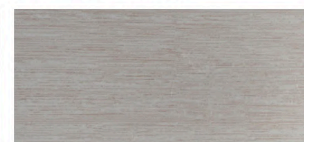
X-579



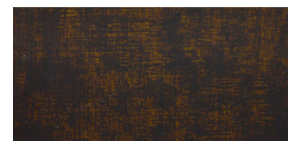
X-1632



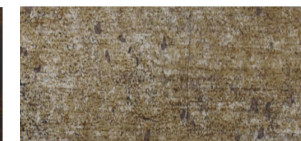
X-2515



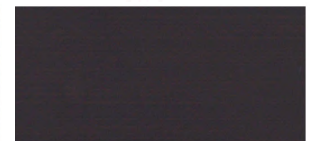
X-2516



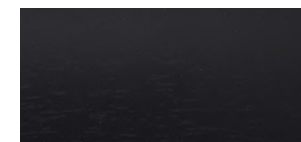
X-1533



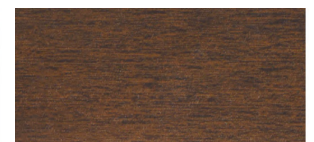
X-1330



X-001



B73



D-1609



# EMBELLISHMENTS

## CLASSIC



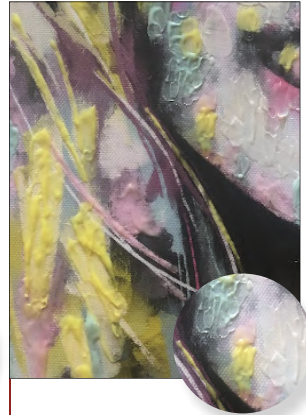
COARSE COAT



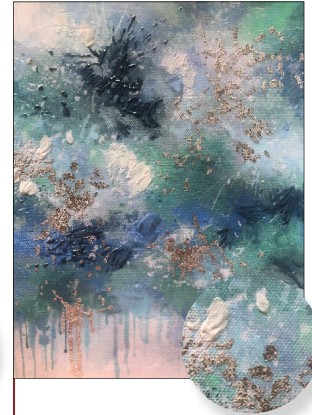
GEL COAT / ROLLER



GEL COAT / FLOAT TOOL



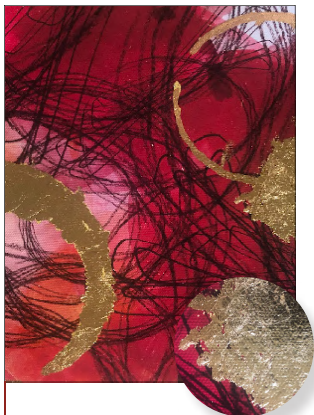
HEAVY EMBELLISHMENT



GEL / PAINT / SILVER LEAF



DIAMOND DUST



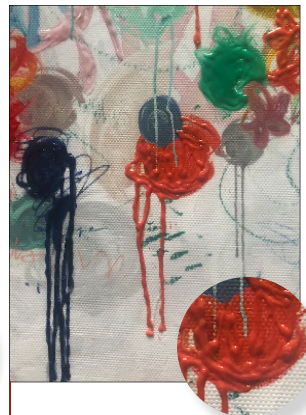
GOLD LEAF (Silver Available)



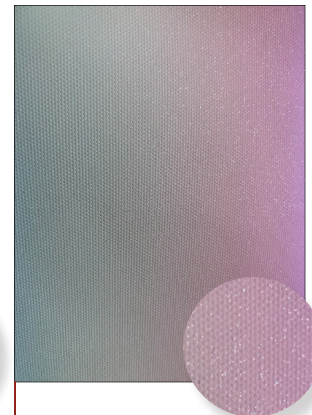
GOLD FOIL



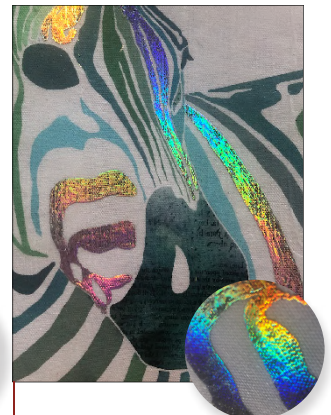
SPOT EMBELLISHMENT



GEL COAT / PAINT



SPRAY GLITTER

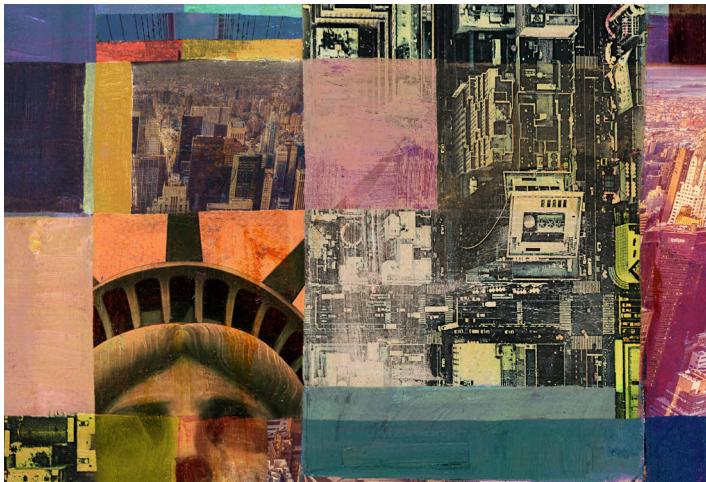
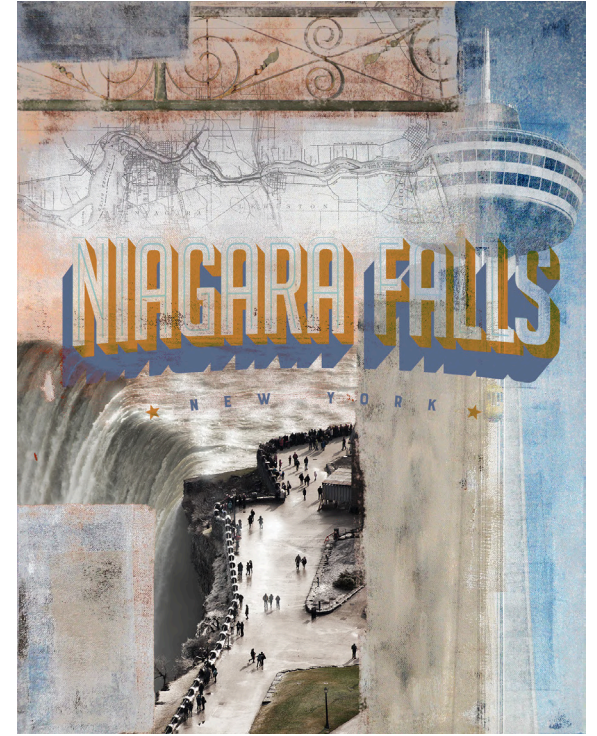


HOLOGRAPHIC FOIL

## STYLIZED



# CUSTOM WALLCOVERING

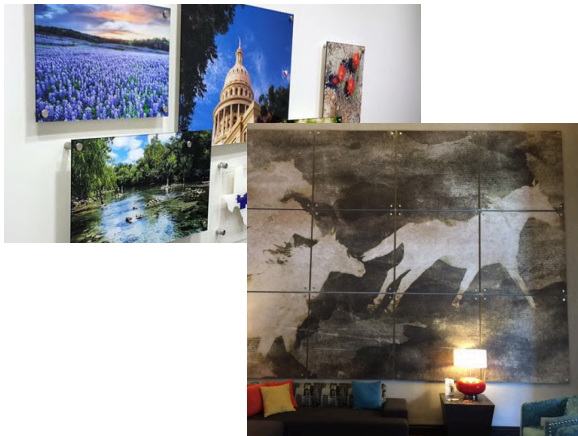




# FLOATER FRAMES



# STAND-OFFS



# PLASTER



# LIGHTED ARTWORK

MIRRORS

ARTWORK FINISHES

**LIGHTED ARTWORK**

LASER CUT

SCRATCH-RESISTANT PANELS

DIMENSIONAL ART

MOSS WALLS





# LIGHTED ARTWORK - PUBLIC SPACE



TOP:  
*Large-scale lighted  
tree panel. ~16' x 24'*  
BOTTOM LEFT:  
*Lighted front-desk  
signage for Kumon.*  
BOTTOM RIGHT:  
*Lighted lasercut panels.  
~ 8' x 16'*



**KUMON**  
MATH. READING. SUCCESS.

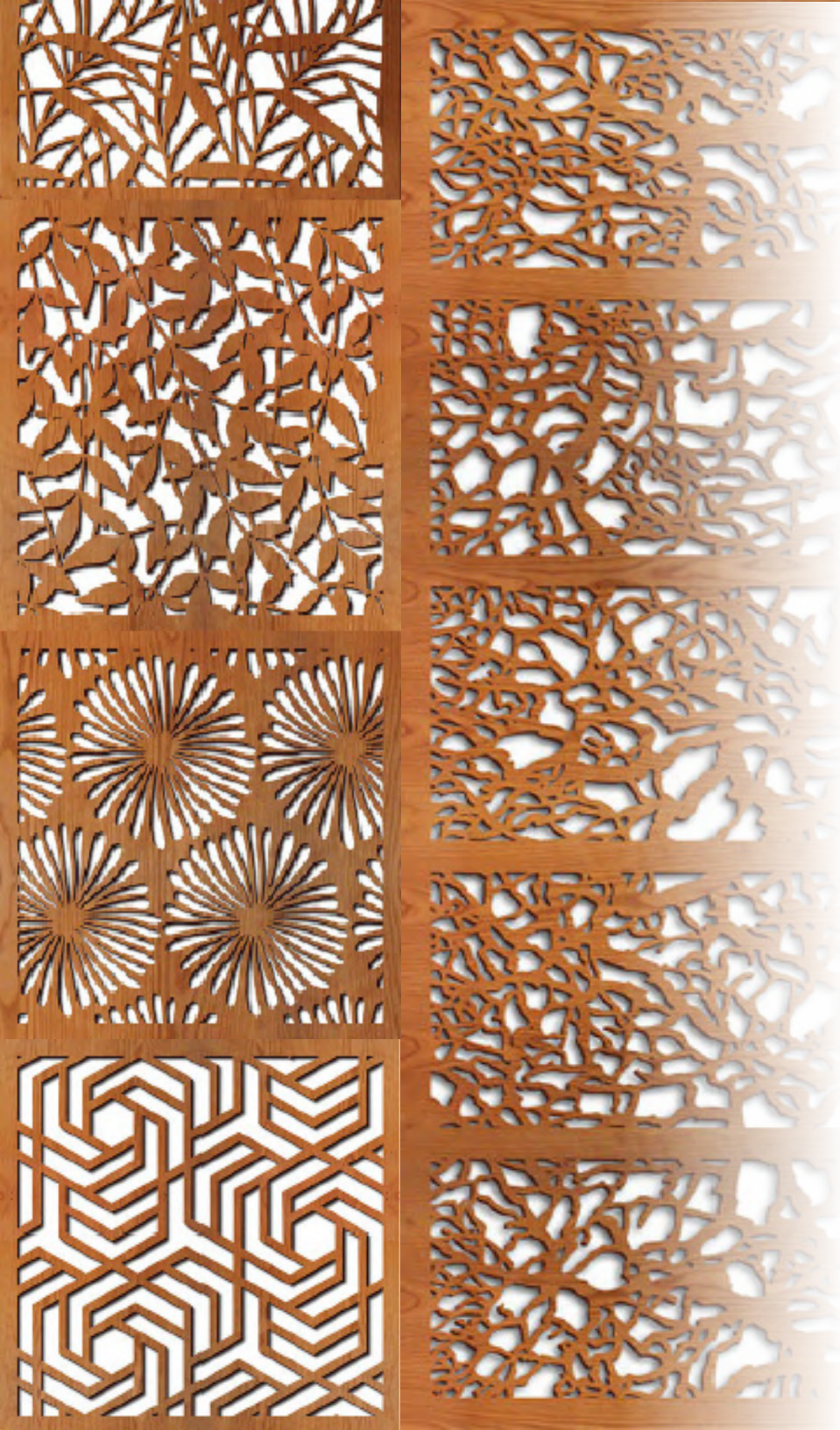




# LIGHTED ART - GUESTROOM







# LASER CUT

- WOOD
- ACRYLIC
- ALUMINUM
- METAL
- SIMULATED WOOD
- CUSTOM PATTERNS
- COLOR-MATCHING

MIRRORS

ARTWORK FINISHES

LIGHTED ARTWORK

**LASER CUT**

SCRATCH-RESISTANT PANELS

DIMENSIONAL ART

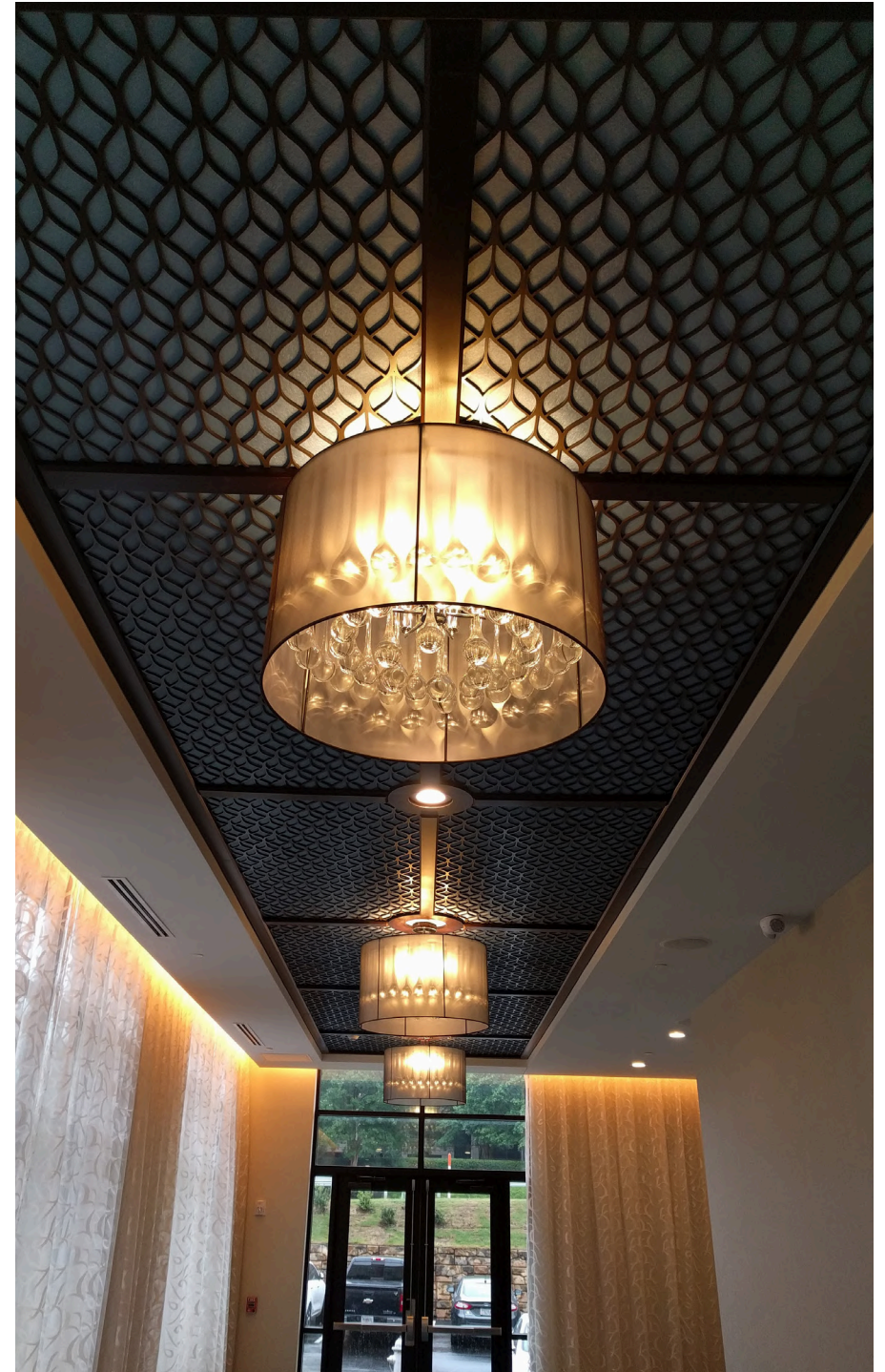
MOSS WALLS





ABOVE: *Hallway/Lobby install.*  
BELOW: *Front desk install.*

RIGHT: *Ceiling install.*





# SCRATCH- RESISTANT PANELS

MIRRORS

ARTWORK FINISHES

LIGHTED ARTWORK

LASER CUT

**SCRATCH-RESISTANT PANELS**

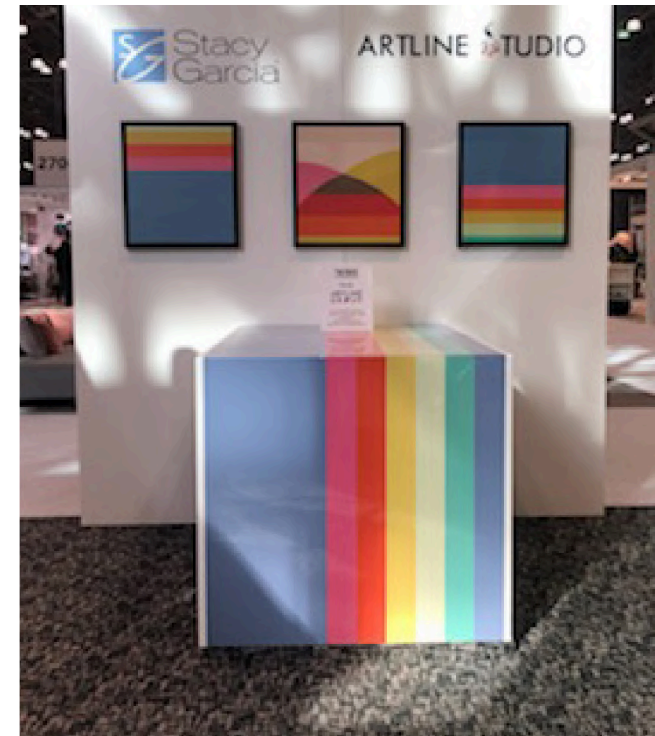
DIMENSIONAL ART

MOSS WALLS





# SCRATCH-RESISTANT PANELS



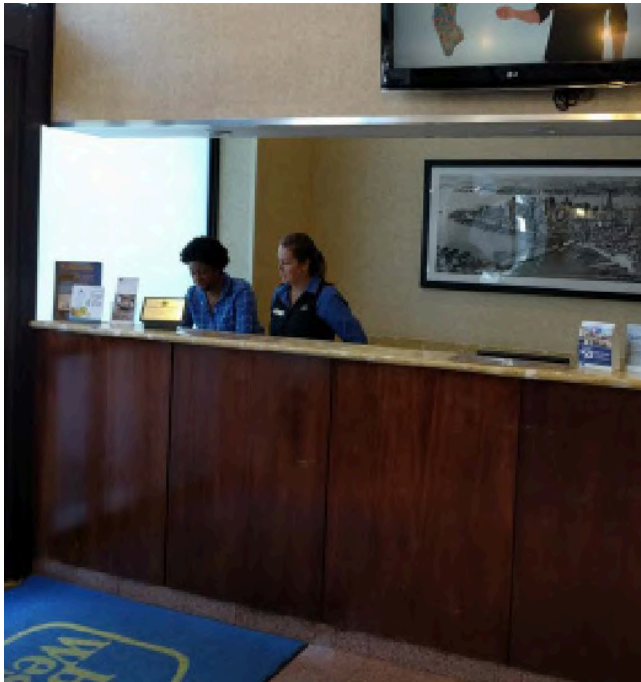
LEFT & MIDDLE: *Elevator Cab - Kimpton Nashville, TN*

RIGHT: *Custom table.*



# SCRATCH-RESISTANT 1-DAY FACELIFT

An improved front desk created by adding paneling to existing millwork. This transformational face-lift was completed in a single day.



**BEFORE**



**DURING**



ABOVE: (Daylight) Light panel off.  
BELOW: (Evening) Light panel on.



**AFTER**



# DIMENSIONAL ARTWORK

MIRRORS

ARTWORK FINISHES

LIGHTED ARTWORK

LASER CUT

SCRATCH-RESISTANT PANELS

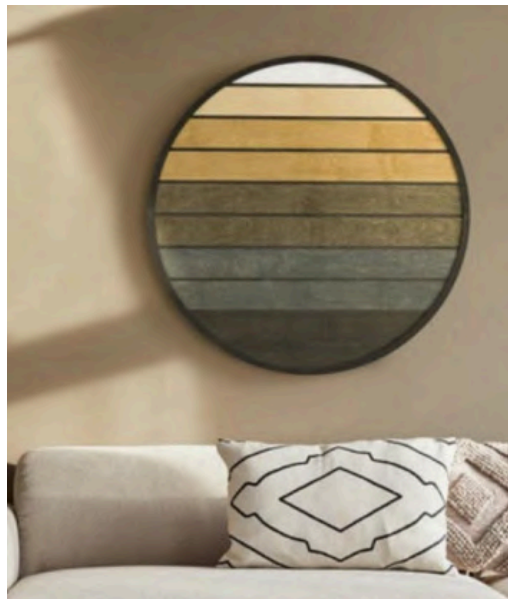
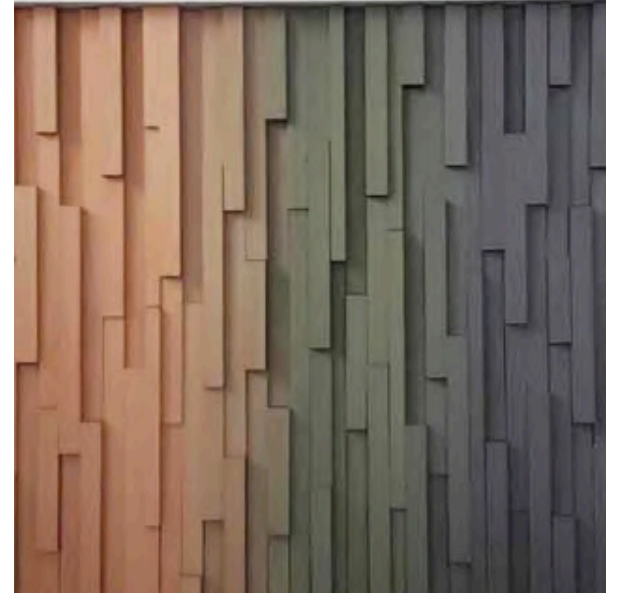
**DIMENSIONAL ART**

MOSS WALLS





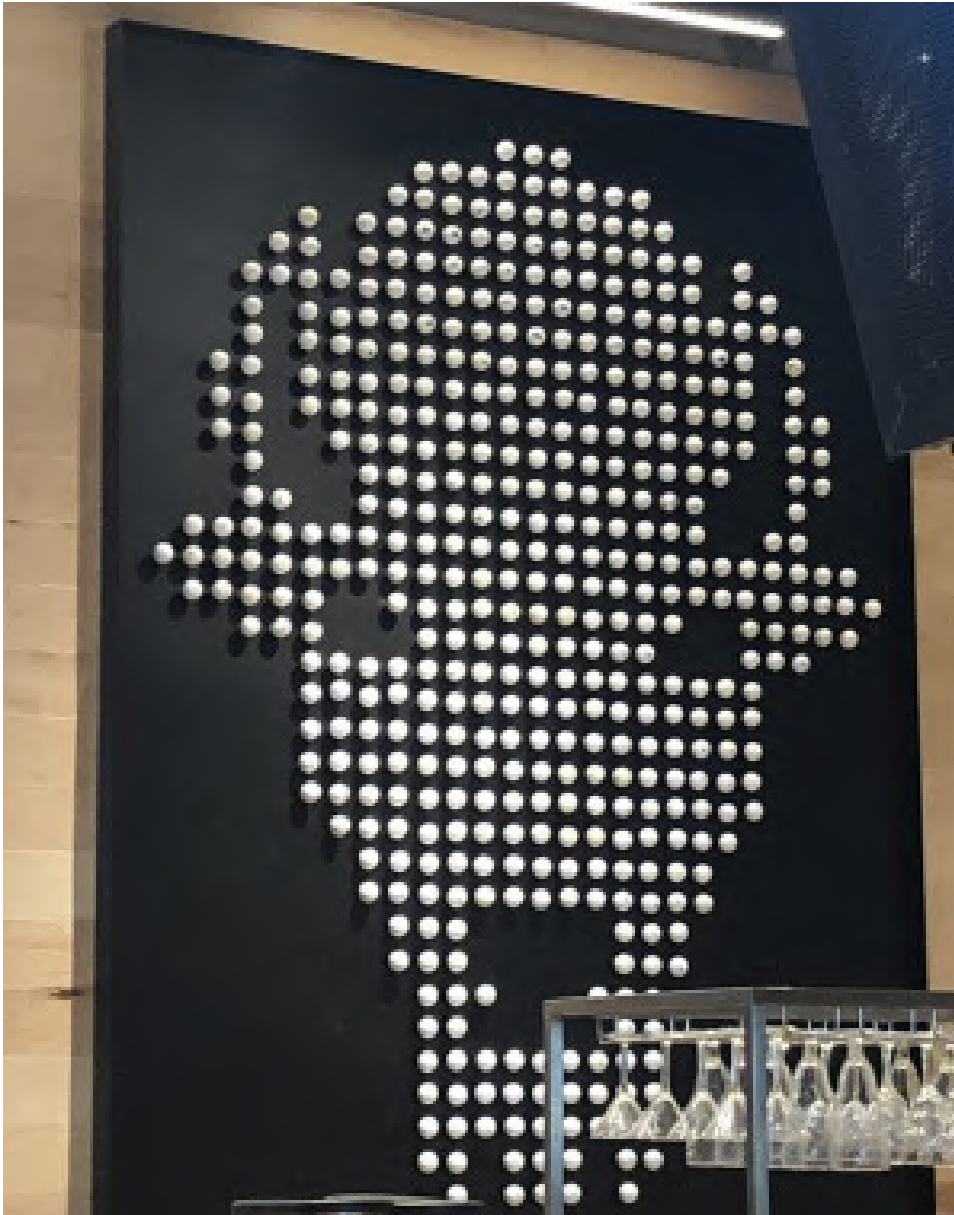
# DIMENSIONAL



TOP LEFT: (Close-up) Multi-layer Acrylic creates depth and interest. TOP RIGHT: (Close-up) Multi-layer Resin creates shadowing.  
BOT. LEFT: (Close-up) Multi-layer Routed Wood Shapes BOT. MIDDLE: Circular Wood cut out BOT. RIGHT: Resin Wall Sculpture



# SCULPTURAL ART



## GOLF BALL BUFFALO HEADS FOR BUFFALO WILD WINGS RESTAURANT CHAIN



ABOVE: (Close-up) Golf balls affixed to panel.



# MOSS WALLS

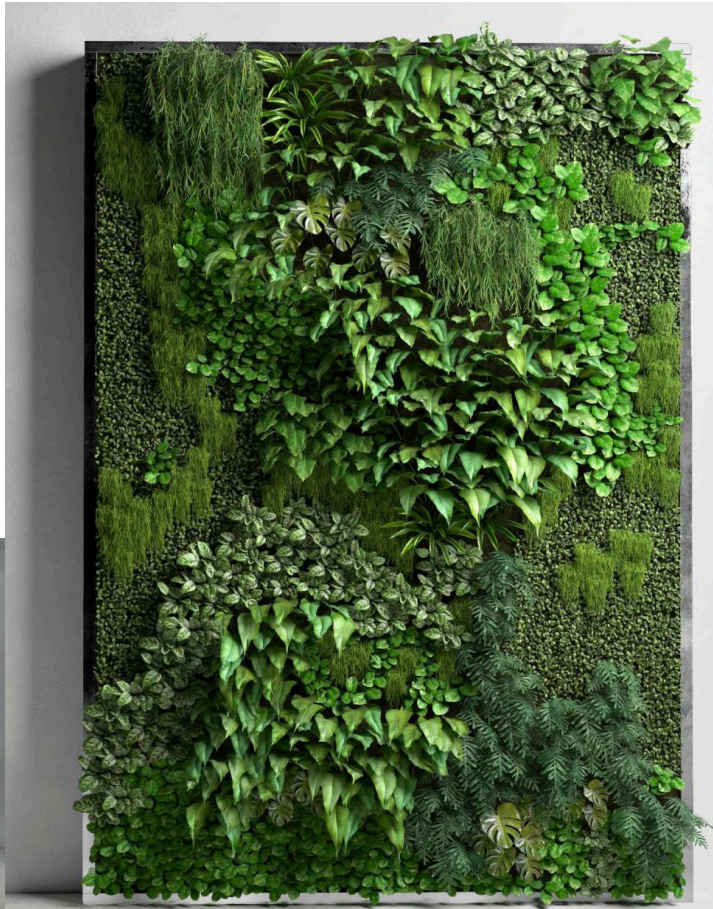
MIRRORS  
ARTWORK FINISHES  
LIGHTED ARTWORK  
LASER CUT  
SCRATCH-RESISTANT PANELS  
DIMENSIONAL ART  
**MOSS WALLS**





# MOSS WALLS

Custom faux-living art for your conference room, corridor, wallcover, or multi-story impact walls.





A close-up photograph of a hand holding a paintbrush, applying white paint to a surface. The background is softly blurred, showing a window with greenery outside and a pink vase on a table. The lighting is bright and natural, creating a warm and creative atmosphere.

***YOUR INSPIRATION  
OUR CREATION.***





YOUR INSPIRATION.  
OUR CREATION.

**ARTLINE GROUP**

1 Midland Ave, Hicksville, NY 11801 • [www.artlinegroup.com](http://www.artlinegroup.com) • P:516.931.5550 F: 516.931.5735