

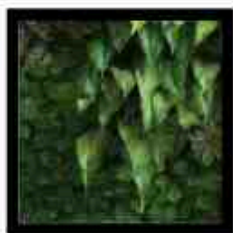
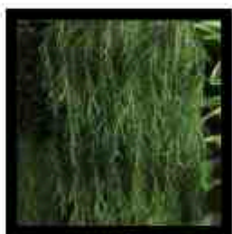


# CURATED COLLECTION



ARTLINE GROUP







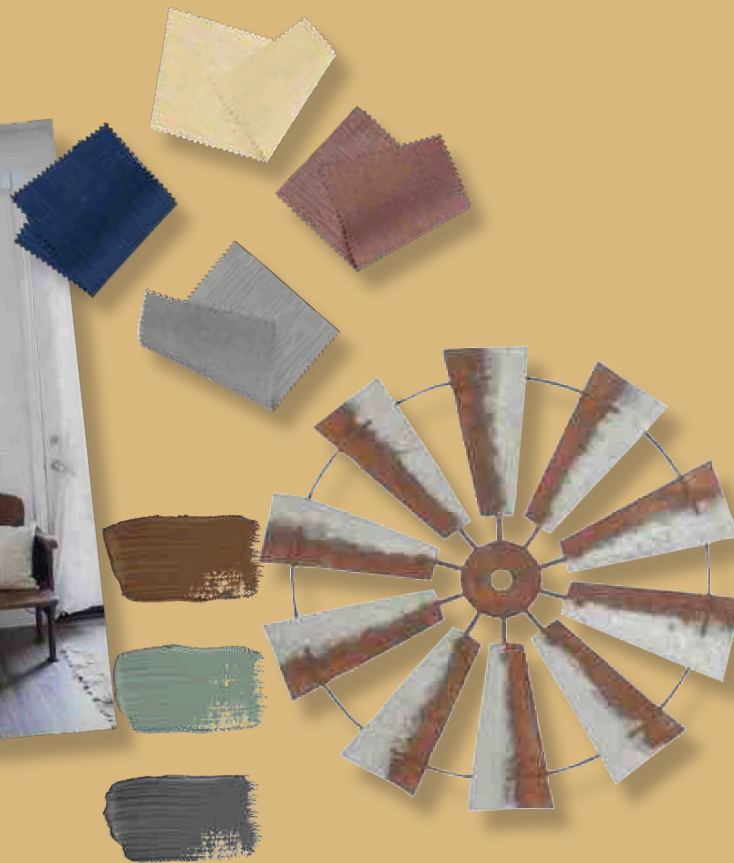
# Curated For Your Inspiration

---

Developed by our talented in-house artists, Curated Collections offer unique custom art concepts inspired by their creative vision. Each piece is designed to bring originality and innovation to commercial spaces.

Partner with us to craft meaningful artwork that enhances your environment.

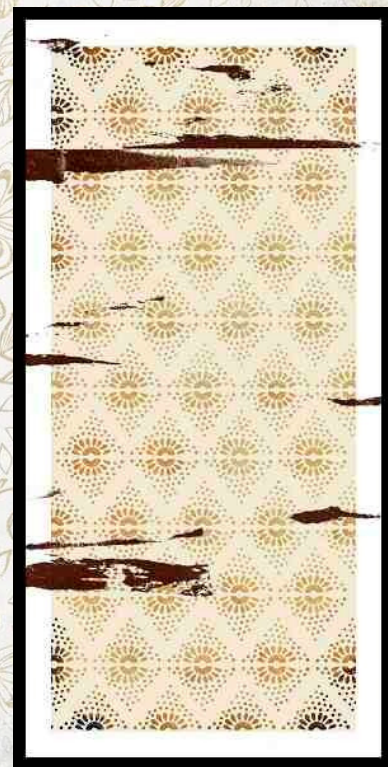
Inspired by ...







# RUSTIC MAGNOLIA







## Collection By:



*Star*

ART DIRECTOR

*Star loves and  
collects vintage  
cameras.*

## PREVIOUS

WASHED INDIGO I & II

## LEFT

- A - LAYER OF LAND  
(paper print)
- B - LINED TEXAS ROAD  
(print on acrylic)
- C - DOTTED GRUNGE  
(paper and acrylic)
- D - LAYERED RINGS  
(canvas)
- E - COLLAGE SILO  
(paper print)

## RIGHT

VINTAGE WALL  
WHEELS - (wood and  
metal)

## WALLCOVER

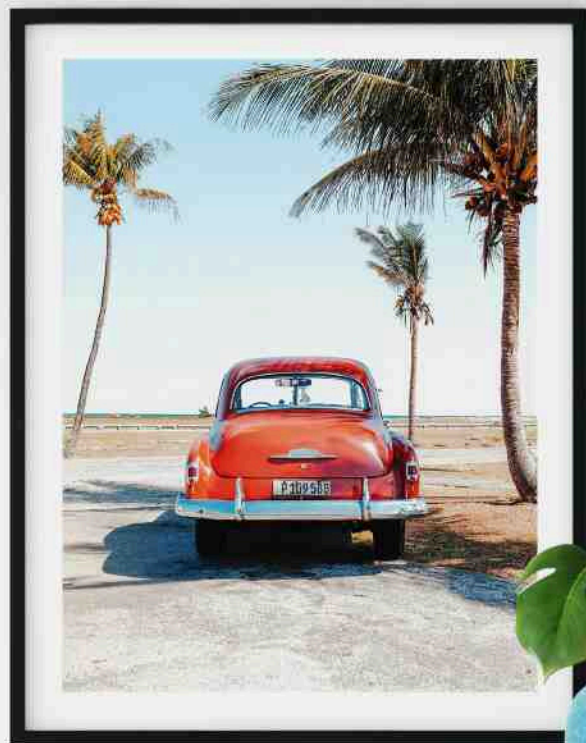
VINTAGE FLORAL  
PAPER

# Inspired by ...



*peach daiquiris, colorful sea creatures, beach towels,  
and summer vacations.*





# BEACHY KEEN

A



B



C



D



F

E





## Collection By:



*Kaitlyn*  
ART CONSULTANT  
*Kaitlyn was born  
and raised in  
Sunny California*

### LEFT

- A - Aerial Beach\_ML  
(Suggested: Canvas)
- B - Miami Car\_ML  
(Suggested: Paper with  
Printed White Border)
- C - Ocean Dance
- D - CKW\_Painted  
Ocean (Suggested  
Canvas Print)
- E - CL\_Textural Coast  
(Suggested: Canvas)
- F - Amber Southwest  
Splotches (Suggested:  
Acrylic Print)

### RIGHT

- CKW\_Warm Watercolor  
Ocean (Suggested  
Framed Canvas Print)



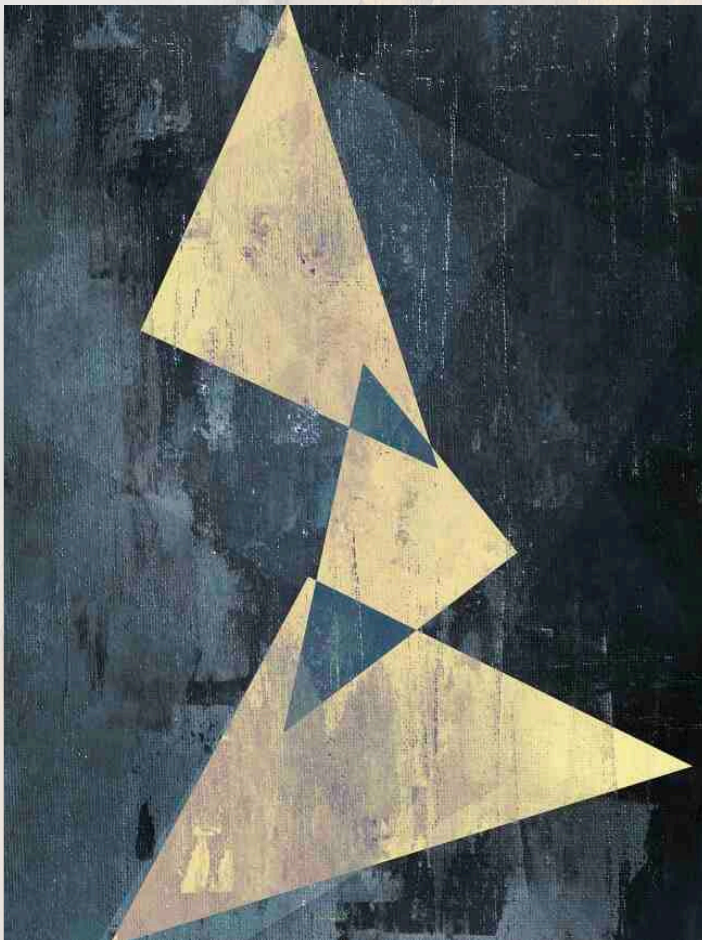
Inspired by ...







# DECO-INDUSTRIAL



A

B



D



C



E



**Collection By:**



*Susie*

GRAPHIC ARTIST

*Susie is a fan  
of culinary  
arts and history.*

**LEFT**

A - INDY TRI (Canvas)

B - GRUNGE SPHERE  
(Paper Print)

C - RIDGED FLOW  
(Canvas)

D - RIDGED GOLD  
(Canvas)

E - DECKED OUT  
DECO (Paper Print)

**RIGHT**

CANDLE WALL  
SCULPTURE - Made  
from forged metal, this  
decorative wall  
sculpture is also a wall  
sconce finished in rust  
brown

**WALLCOVER**  
TEXTURE RAYS

Inspired by ...







# TIDEWATER

A



B



C



D

E

F





## Collection By:



ART DIRECTOR

*Star has been visiting  
North Carolina's  
Outer Banks  
since she was 10.*

## PREVIOUS

HEXED BODIE

## LEFT

A - WC HULL (paper  
print)

B - AVANT WATER-  
COLOR I & II (canvas )

C - BEACH CIRCLES  
(print on acrylic)

D - SEAGRASS PAINT  
(paper print)

E - PALMED PATTERN  
(print on acrylic)

F - STARS (paper print)

## RIGHT

PAINTED DRIFT WOOD  
- (wall sculpture)

## WALLCOVER

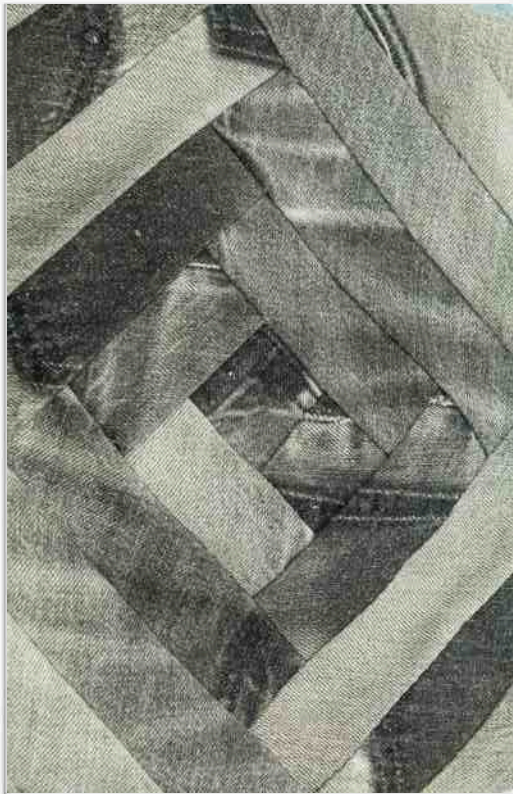
CIRCULAR TILE WC

# Inspired by ...



*north central Florida, magnolia blossoms, live oak branches,  
& tin roof shacks*





# SPANISH MOSS

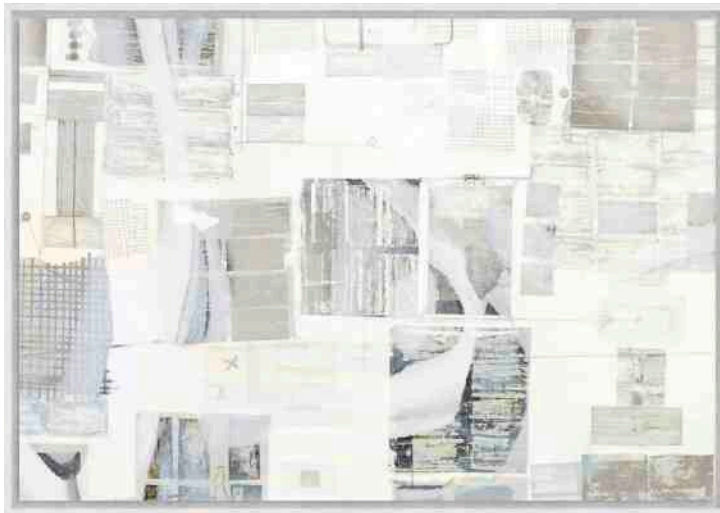
A



B



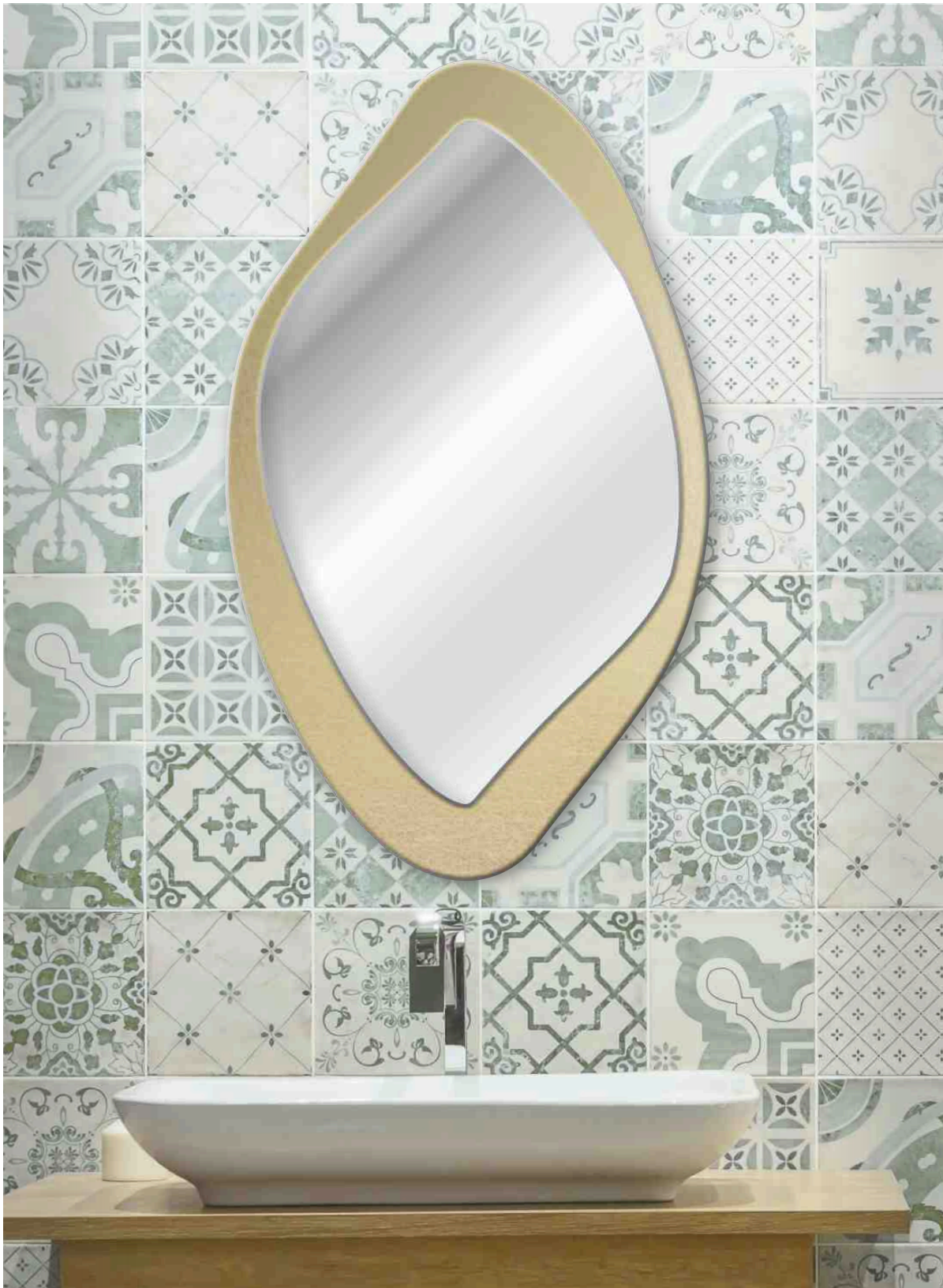
C



E

D





## Collection By:



*Ramon Keys*  
GRAPHIC ARTIST

*Growing up on military bases across the country and internationally, Ramon's art reflects the diverse cultures and landscapes that shaped his perspective.*

### LEFT

- A - Palmetto Neutral\_ML  
(Suggested Print on Paper)
- B - Spanish Moss\_ML  
(Suggested: Print on Paper)
- C - Osceola\_ML (Suggested:  
Canvas Print with Gold Leaf  
Accent)
- D - Tin Roof Shack\_ML  
(Suggested: Canvas in Floater  
Frame)
- E - Stormy Leaves\_ML  
(Suggested: Print on Paper)

### RIGHT

Petal Mirror

### COVER

Aqua Springs\_ML

Inspired by ...







# TYPOLGY

A



B



C



D



E



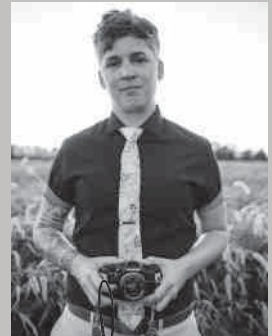
F







## Collection By:



*[Signature]*

ART DIRECTOR

*Star loves the  
Detroit Redwings!*

## PREVIOUS GREAT LAKES

### LEFT

A - DETROIT TYPE

(paper print)

B - MILK BAR

(canvas)

C - SIGNS

(print on acrylic)

D - HUSTLE

(canvas)

E - 3 FASHION

(print on acrylic)

F - FALL LEAF

(paper print)

### RIGHT

PRINTING PRESS

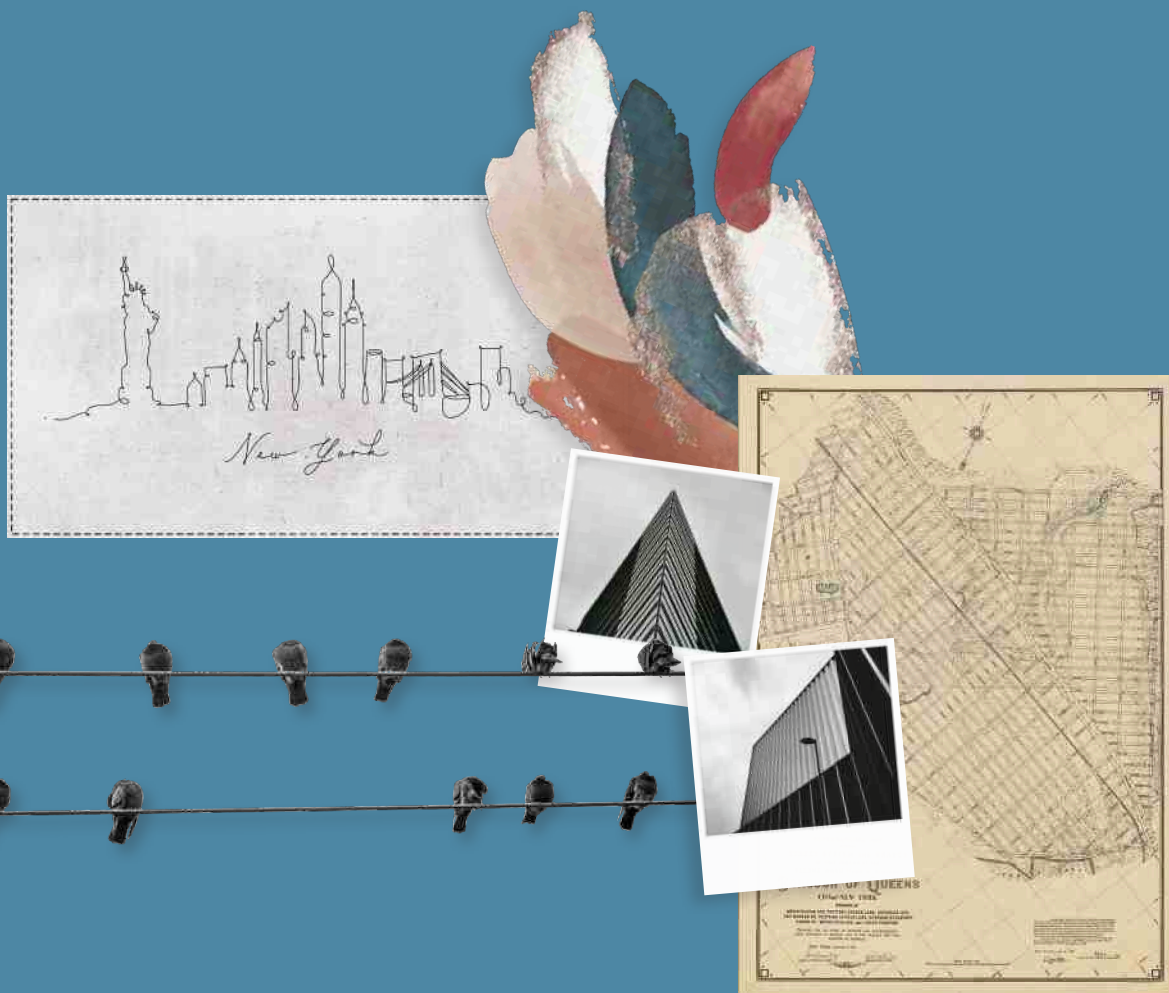
BLOCKS

(wall sculpture)

## WALLCOVER

ITALIAN WORDS

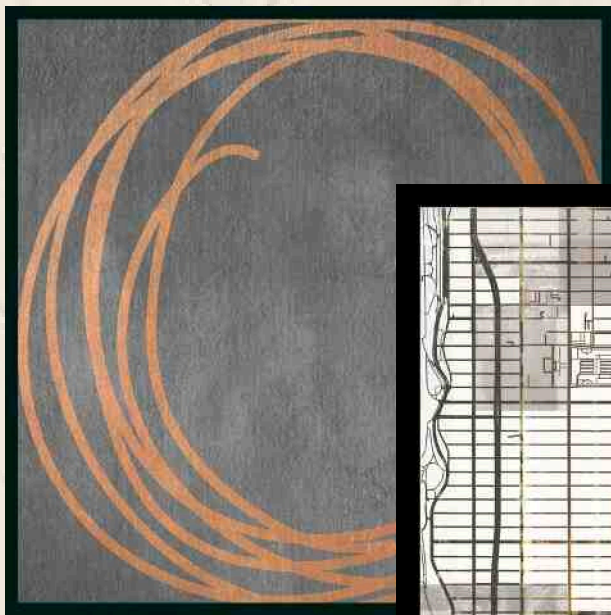
# Inspired by ...



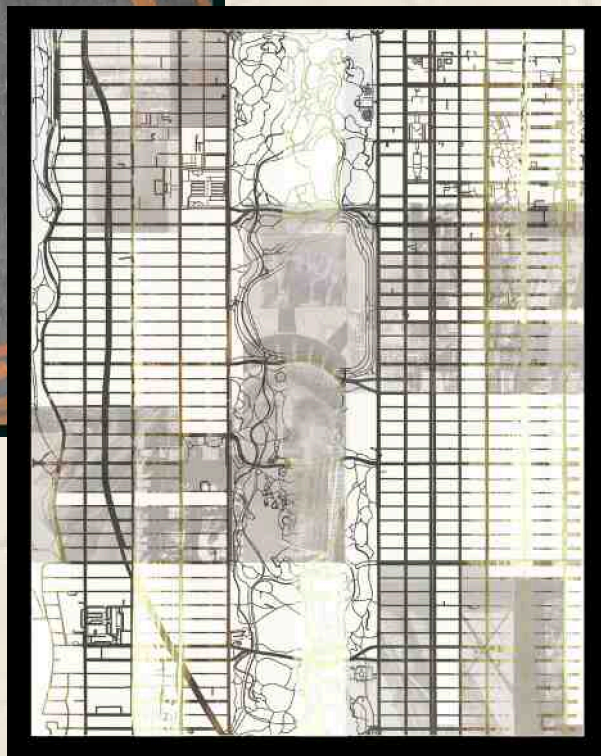




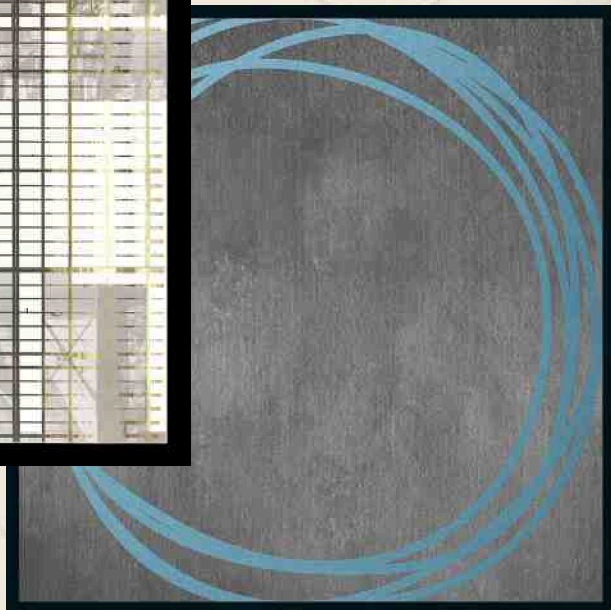
# BETWEEN THE LINES



A



B



C





## Collection By:



*Susie M. Q.*

GRAPHIC ARTIST

*Susie enjoys the natural setting (and the wine) of the Finger Lakes region of New York.*

### LEFT

A - CIRCLE LINES I  
(Canvas Print)

B - CIRCLE LINES II  
(Canvas Print)

C - LINES OF MANHATTAN (Paper Print)

### RIGHT

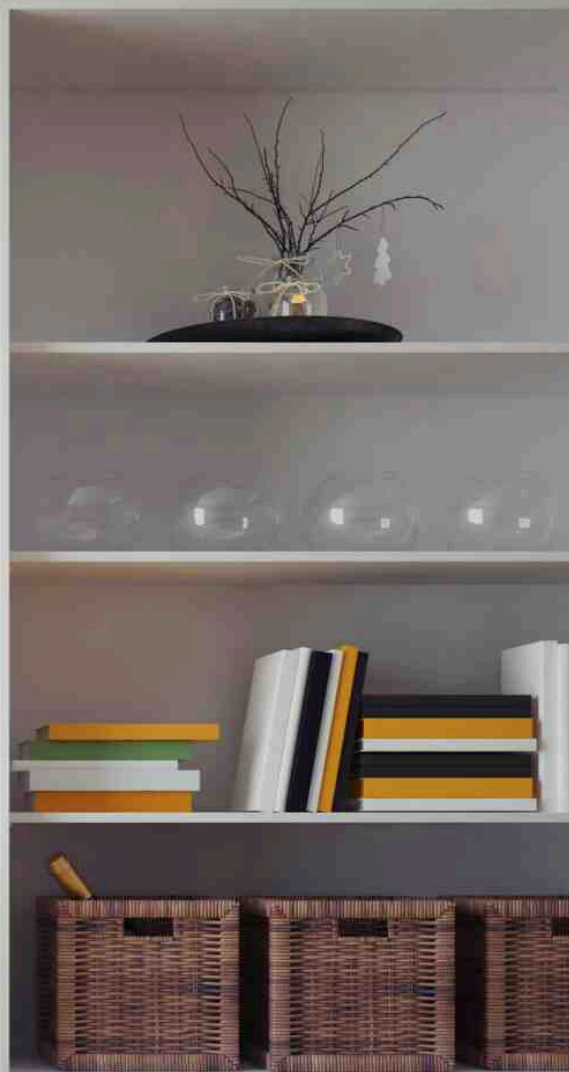
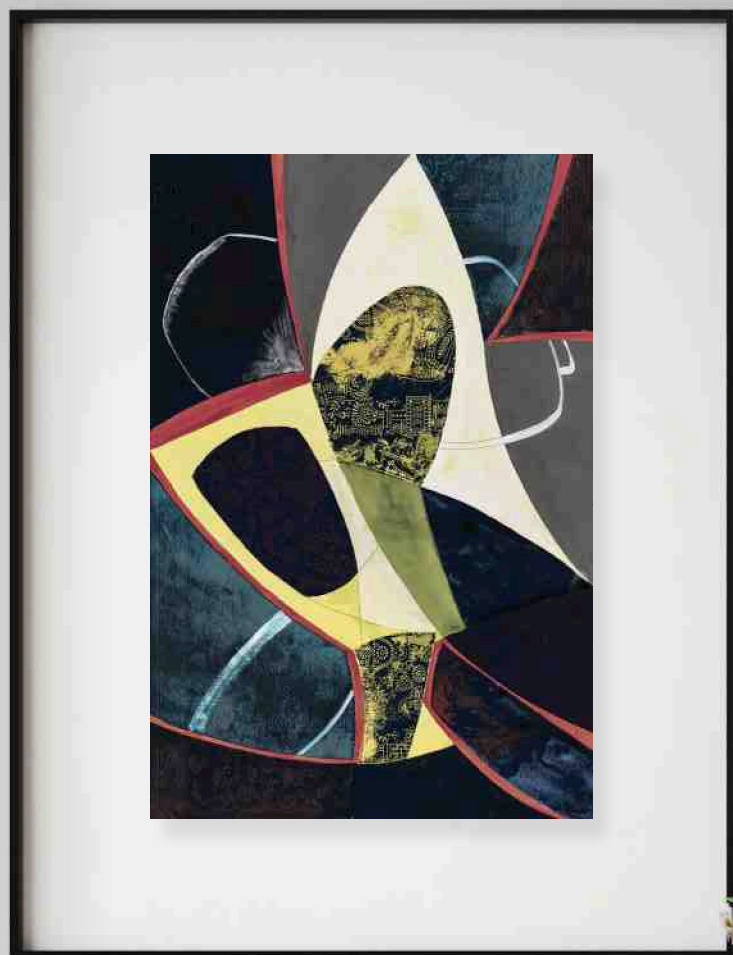
ABSTRACT LINES -  
a collection of framed  
paper prints showcasing  
line elements in abstract  
art and photography

**WALLCOVER**  
RAVING BLUE

# Inspired by ...



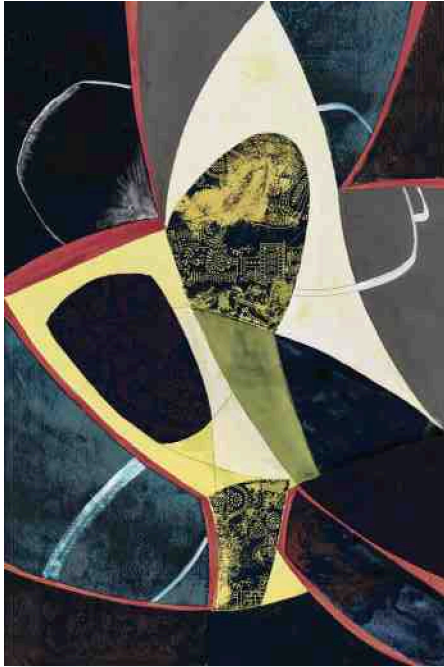
*Lana Del Ray, wet paintbrushes, Chinese takeout,  
& the Brooklyn Bridge*





# ART STUDIO

A

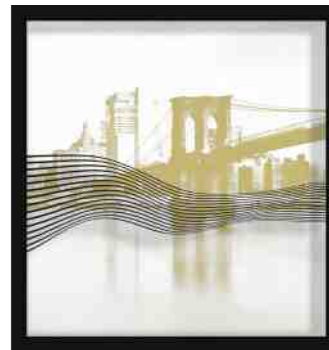


B

NEW YORK  
MINUTE



C



D

## Collection By:



*Kaitlyn*  
ART CONSULTANT

*Kaitlyn sees the world  
through a painter's  
lens, turning every  
moment into art*

### LEFT

A - Patterned\_ML  
(Suggested: Floated  
Paper Print with  
Chunky Mat)  
B - New York  
Minute\_ML  
(Resin Lettering)  
C - Indigo- ing\_ML  
(Left & Right)  
(Suggested: Print on  
Paper or Canvas)  
D - NYC Stripes A,B &  
C\_ ML (Suggested:  
Skyline to be Print on  
Paper, Line-work Floated  
Print on Acrylic in  
Shadowbox Frame)

### RIGHT

Natalia\_ML  
(Shown printed on four  
Acrylic Panels)

### WALLCOVER

Blue Hashed

# Inspired by ...



*stucco seascapes, sandstone & spaghetti westerns*



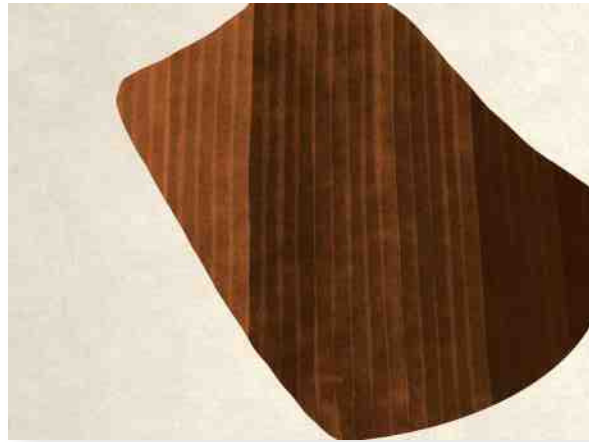


# TERRACOTTA CONTEMPORARY

A



B



C



D







**Collection By:**



*Ramon Keys*

GRAPHIC ARTIST

*Ramon likes to  
combine watercolor  
and colored pencil  
in his art.*

**LEFT**

A - d89378586

(Suggested: Framed  
Print on Paper)

B - Stepped Shape  
Brown\_ML

(Suggested: Gallery  
Wrapped Canvas)

C - Striped Cat\_ML  
(Suggested: Canvas in  
Floater Frame)

D - Cinque Terre\_ML  
(Suggested: Diptych  
Print on Wood)

**RIGHT**

Desert Round\_ML  
(Suggested: Backlit Print  
on Wood)

**WALLCOVER**

Beige Texture\_ML

Inspired by ...









# FUNKY MOD

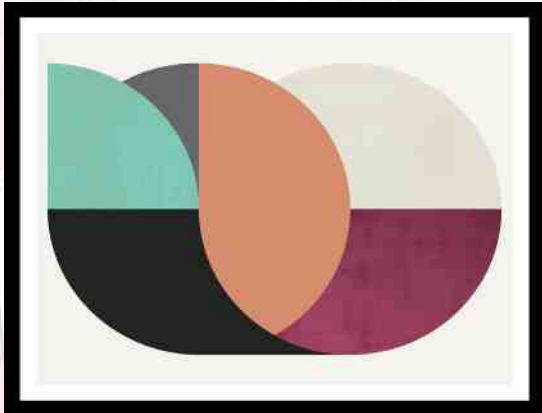
A



B



C

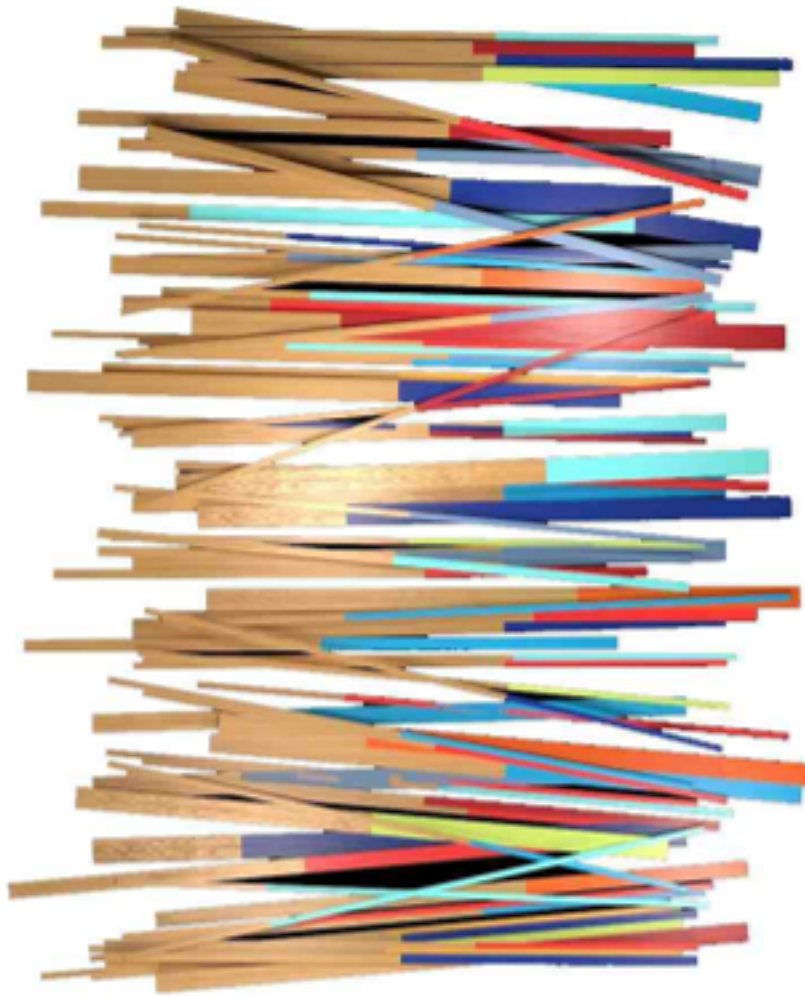


D



E





## Collection By:



*[Signature]*

ART DIRECTOR

*Star loves camping,  
hiking and kayaking.*

**PREVIOUS**  
BEAVER STATE SPOTS

### LEFT

- A - PORTLAND GEOS  
(paper print)
- B - MANASSAS  
BLOCKED  
(print on acrylic)
- C - PATTERN &  
TEXTURE (paper print)
- D - ABSTRACT  
WATERCOLOR II  
(canvas)
- E - SECOND SPOTS  
(paper print)

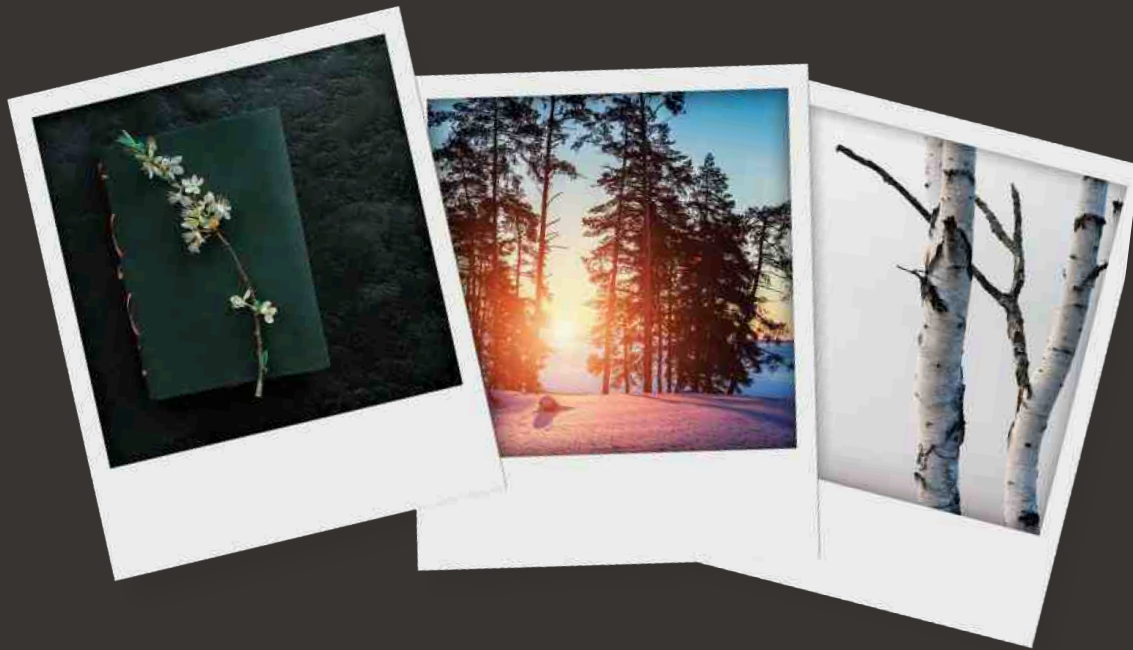
### RIGHT

DIPPED STICKS  
(wood sculpture)

### WALLCOVER

CIRCLE SECTIONS

# Inspired by ...



*birch trees, cotton candy sunsets, & long hikes with a sketchbook*





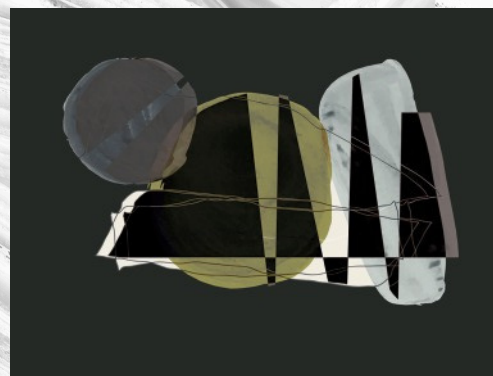
# BIRCH FOREST

A

B

C

D







## Collection By:



*Kaitlyn*

ART CONSULTANT

*Kaitlyn spent her childhood camping, where tall trees and quiet trails sparked her love for nature.*

### LEFT

A - Slate Tree Rings\_ML  
(Suggested: Routed Print on Acrylic)

B - Painted Owl\_ML  
(Suggested: Framed Print on Watercolor Paper)

C - Cutout\_A\_ML  
(Suggested: Print on Aluminum)

D - Peach Mountains\_ML  
(Suggested: Gallery Wrapped Canvas)

### RIGHT

Seasonal Tree  
Collection\_ML  
(Suggested: Framed Print on Watercolor Paper)

### WALLCOVER

Layered Agate



# Inspired by ...







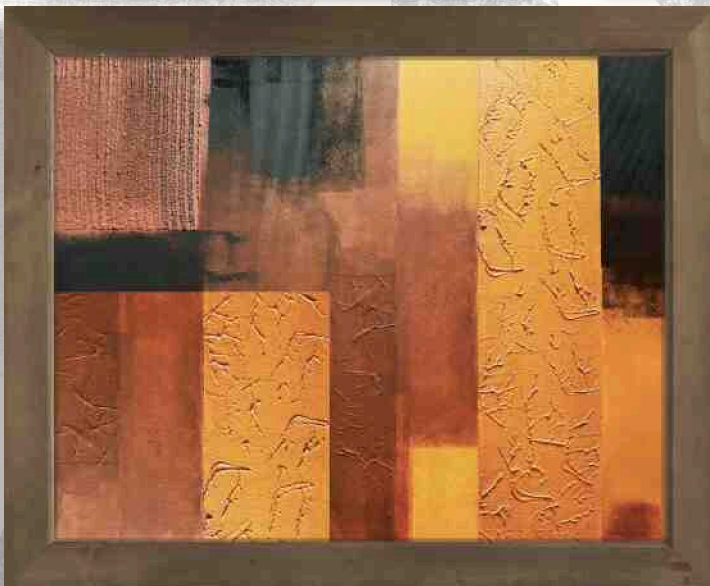
# MIDCENTURY MOD



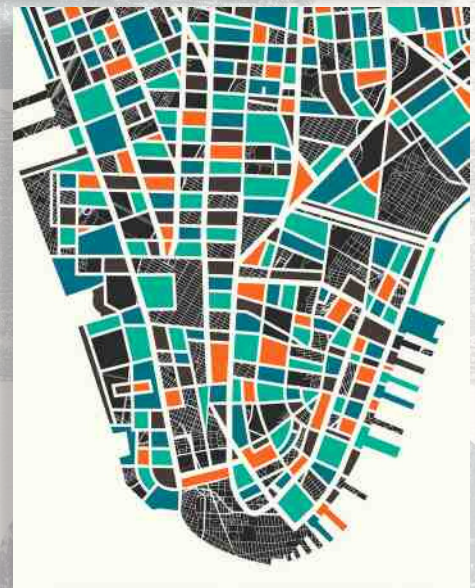
A



B



C



D





## Collection By:



*Sinilo*

GRAPHIC ARTIST

*Lusie explores new  
places by way of  
local foods*

### LEFT

A - MOD PLANT  
(Canvas)

B - MOD SPHERE  
(Paper Print)

C - SPLASH DRAG  
(Paper Print)

D - SHORES OF  
MANHATTAN  
(Canvas)

### RIGHT

IRON SCULPTURE

an effect that yields  
captivating curves and  
angles, while the shape  
and material are  
industrial in nature, the  
antique brass finish  
brings a sense of  
warmth.

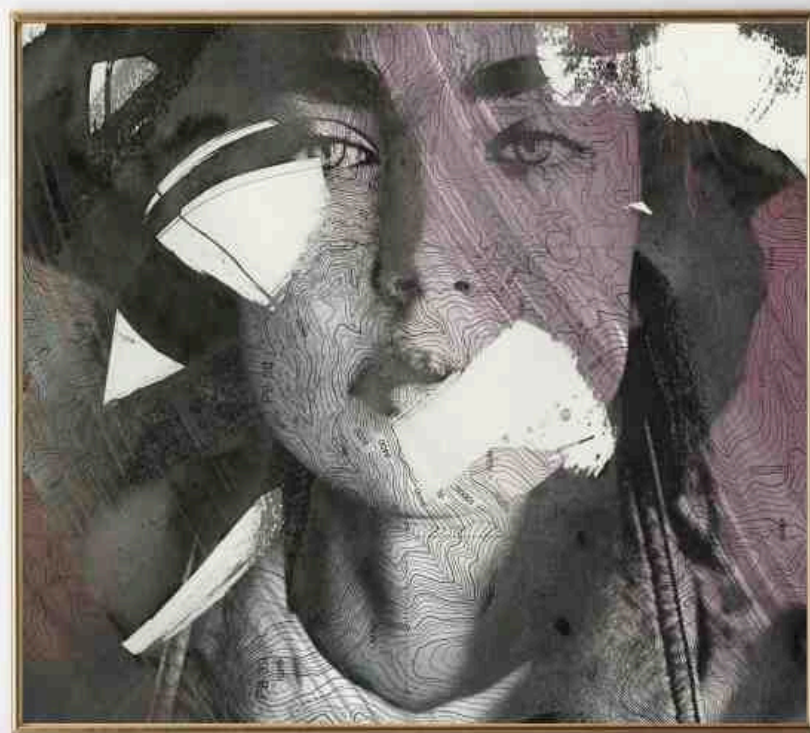
### WALLCOVER

SHORES OF  
MANHATTAN

Inspired by ...





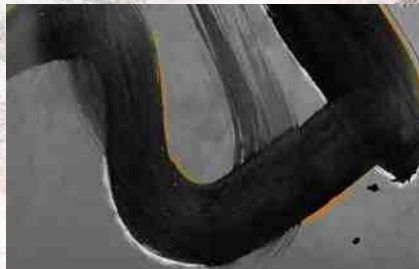
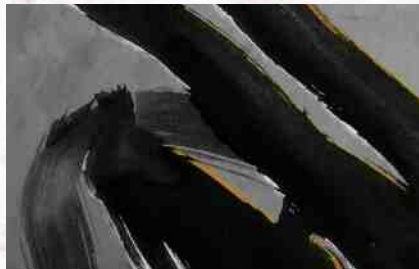


# URBAN SCAPE

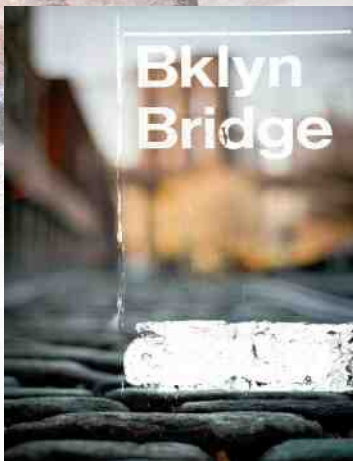
A



B



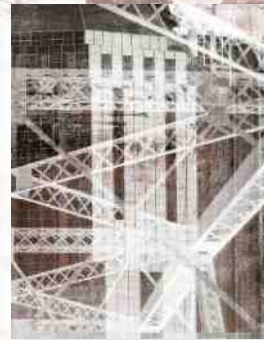
C



D



E



F





## Collection By:



ART DIRECTOR

*Star is inspired by  
the art scene of  
NYC in the 1980s.*

## PREVIOUS FACIAL TOPOGRAPHY

### LEFT

- A - COLOR LAYERS  
(paper print)
- B - BRUSHED UP I & II  
(canvas)
- C - (paper print)
- D - BRIDGE BLUR  
(print on acrylic)
- E - CITY GRAFITTI  
(canvas)
- F - BRIDGING GAP  
(print on acrylic)

### RIGHT

Paper Planes  
(wall sculpture)

## WALLCOVER HIGH ART



1 Midland Ave | Hicksville, NY 11801 | 516-931-5550 | [artlinegroup.com](http://artlinegroup.com)